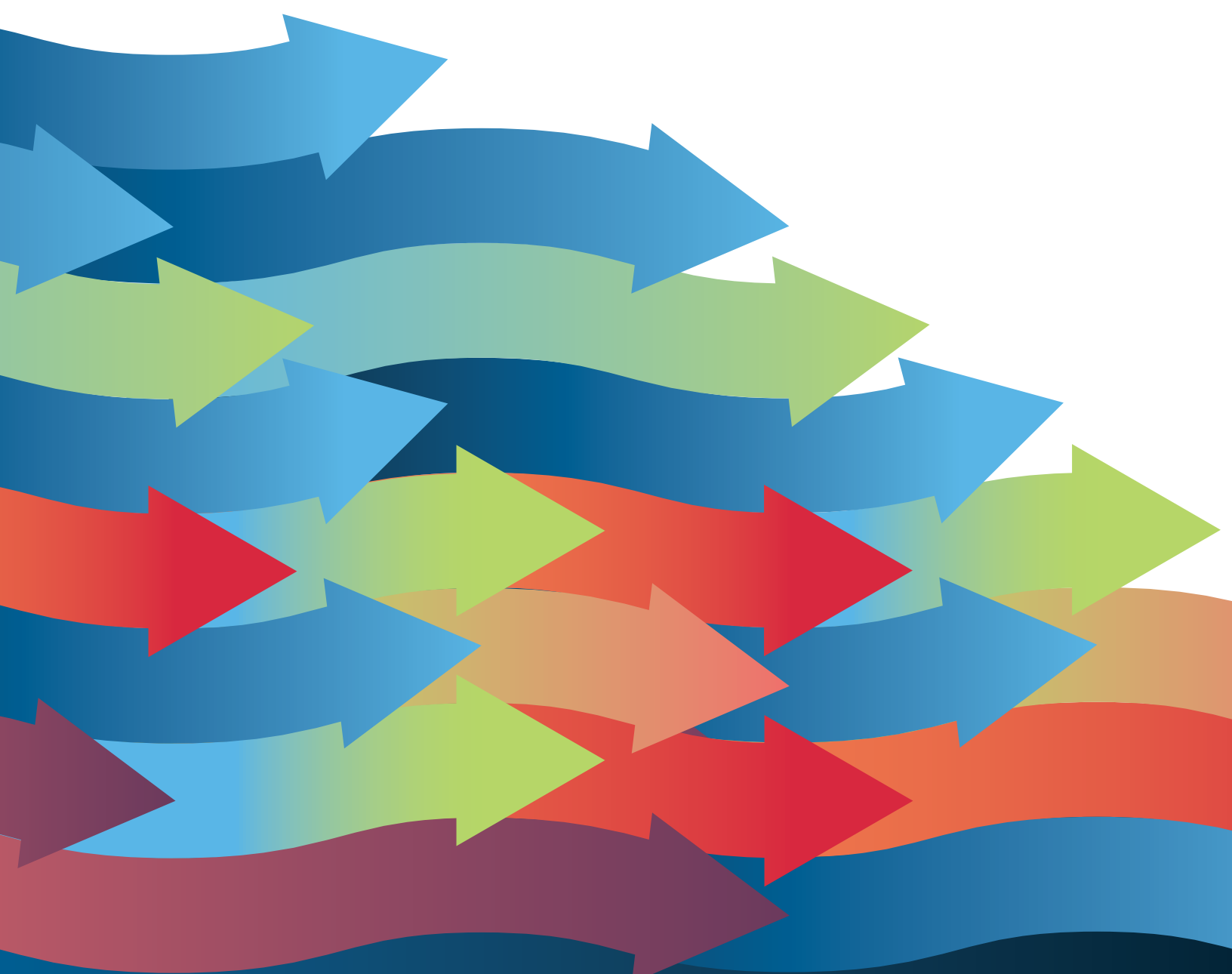


ACCME DATA REPORT

Evolving Impact in a Shifting Landscape – 2024





ACCME Data Report:

Evolving Impact in a Shifting Landscape – 2024.

© 2025 by the Accreditation Council for Continuing Medical Education (ACCME®).

All Rights Reserved.

Suggested Citation:

Accreditation Council for Continuing Medical Education. 2024. *ACCME Data Report: Evolving Impact in a Shifting Landscape – 2024*. www.accme.org/2024-data-report.

For copies of previous years' reports, visit accme.org/data-reports.

Table of Contents

ABOUT THIS REPORT	4
MESSAGE FROM THE PRESIDENT AND CEO	5
EXECUTIVE SUMMARY	7
CME/CE PRESENTED BY PROVIDERS ACCREDITED IN THE ACCME SYSTEM	
Table 1. Size of the CME/CE Enterprise	12
Figure 1. Activities and Interactions 2005-2024	13
Table 2. Activities by Organization and Activity Type	14
Table 3. AMA PRA Category 1 Credits™ Offered by Organization and Activity Type	15
Table 4. Physician Interactions by Organization and Activity Type	16
Table 5. Other Learner Interactions by Organization and Activity Type	17
Table 6. Income	18
Table 7. Income by Organization Type	19
Figure 2. Total Income	20
Table 8. CME/CE Activities and Interactions with and without Commercial Support	21
Figure 3. Income by Organization Type	22
CME/CE OUTCOMES DATA	
Table 9. Number of Activities by Outcome Measurement Type	24
CME PRESENTED BY ACCME-ACCREDITED PROVIDERS ONLY	
Table 10. Size of the CME Enterprise	26
Table 11. Income by Organization Type	28
CME PRESENTED BY STATE-ACCREDITED PROVIDERS ONLY	
Table 12. Size of the CME Enterprise	30
Table 13. Income by Organization Type	32
CE PRESENTED BY JOINTLY ACCREDITED PROVIDERS ONLY	
Table 14. Size of the CE Enterprise	34
Table 15. Income by Organization Type	35

About This Report

Each year, accredited providers within the Accreditation Council for Continuing Medical Education (ACCME®) System submit data describing their accredited education activities and overall education programs. The ACCME aggregates this information to give a view of the year and long-range trends. The ACCME reviews the data reported by each accredited organization in the context of what the provider reported in the prior year, as well as in the context of ACCME's reporting instructions.

The purpose of the review is to identify and correct errors caused by misapplication of ACCME data definitions and data entry mistakes, and to gain an understanding of the current continuing medical education/continuing education (CME/CE) environment and the nature of the education being provided. ACCME does not provide full verification of the accuracy of all reported information but does follow up on outliers or major changes from previous years.

The ACCME Data Report 2024 features information on 1,561 diverse accredited education providers in the ACCME System. This includes:

- ACCME-Accredited Providers (635): Organizations that offer CME to primarily national or international audiences. These providers' efforts focus on a wide range of local and national performance gaps and improved healthcare goals.
- State-Accredited Providers (739): Organizations that offer CME primarily to learners from their state or contiguous states. These providers are accredited by [ACCME Recognized Accreditors](#). These organizations tend to specialize in local, community-based health issues.
- Jointly Accredited Providers (187): Organizations that focus on continuing education by and for healthcare teams. These providers are accredited by [Joint Accreditation for Interprofessional Continuing Education™](#). ACCME is one of the founding members of Joint Accreditation. Jointly accredited providers advance interprofessional continuing education (IPCE) and team-based care.

All accredited organizations, regardless of accreditor, are accountable for adhering to equivalent standards for developing, managing, and evaluating their educational programs.

Organizations accredited in the ACCME System are located in 50 states, 4 U.S. territories including the District of Columbia, and 15 foreign countries. The geographic distribution and diversity of accredited education providers means that physicians and healthcare teams have access to high-quality education where they live and work that addresses local, national, and international healthcare priorities.

A complete and current database of providers accredited in the ACCME system can be found in the [CME Provider Directory](#).

For more information about the terms used in the data report, please see the [ACCME/AMA Glossary of Terms and Definitions](#).



Message from the President and CEO



GRAHAM MCMAHON, MD, MMSC
President and CEO, ACCME

EACH YEAR, ACCME is proud to share this report with our community — more than a collection of numbers, it offers a lens into the values, priorities, and resilience of accredited continuing medical education/continuing education (CME/CE). The 2024 data describe an enterprise that is thriving: adapting to structural and financial shifts, engaging diverse learners, and sustaining its mission to advance clinician performance and patient care.

In 2024, total reported income across the ACCME System reached \$3.7 billion, a new record, underscoring continued investment in accredited continuing education across the healthcare community. While commercial support contracted modestly (down 5% year over year), this was offset by ongoing strength in registration fees (55% of total revenue) and record levels of advertising and exhibit income, up 8% and now exceeding \$725 million. These trends reflect both the diversity of the enterprise and its ability to sustain educational innovation while reducing reliance on any single source of funding.

The structure of the CME/CE system continues to evolve. Consolidation within healthcare delivery systems has led to fewer but often larger and more productive accredited providers, while the variety of educational formats has expanded. Enduring materials and live conferences continue to anchor activity volume, with enduring materials supporting flexible, self-paced access to specialized content, and national meetings convening learners around emerging science, policy, and professional community.

While regularly scheduled series (RSS) account for a smaller proportion of overall activity counts, their repeated, longitudinal nature — often offered weekly throughout the year — means that they contribute disproportionately to physician engagement and team-based learning. This longitudinal, team-centered approach remains particularly important in hospital and health system settings, where continuous learning is embedded in clinical practice.

Importantly, each of these educational formats plays a distinct and complementary role in supporting clinician learning:

- Online enduring materials enable deep dives into emerging and highly specialized content.
- Large national meetings foster community, professional identity, and rapid dissemination of new research.
- Local, longitudinal activities like RSS sustain team-based learning and quality improvement within clinical care.



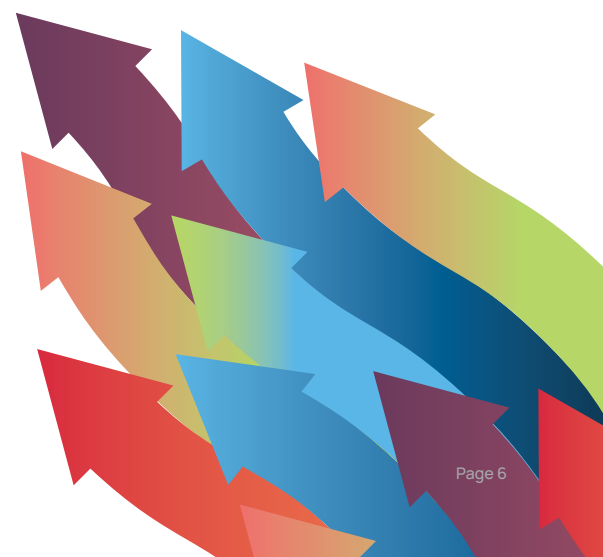
Across the enterprise, accredited providers continue to expand their focus beyond knowledge transfer alone. A growing proportion of activities now assess competence (95%), performance (46%), and even patient health outcomes (18%), reflecting the evolving goals of CME/CE to support real-world clinical practice and outcomes.

Thank you to every member of the accredited CME/CE community. Your commitment enables this system to remain resilient, relevant, and deeply impactful – helping clinicians adapt to complex healthcare environments and delivering better care to patients and communities. ACCME remains dedicated to supporting your work and strengthening the infrastructure of trust that supports lifelong learning.

Let us continue this journey together—toward a future where accredited continuing education empowers every clinician, every team, and every patient interaction.

Graham McMahon, MD, MMSc
President and CEO

**YOUR
COMMITMENT
ENABLES THIS
SYSTEM TO
REMAIN RESILIENT,
RELEVANT,
AND DEEPLY
IMPACTFUL.**



Executive Summary

OVERVIEW

Now in its 27th year, the ACCME Data Report continues to serve as a vital resource for understanding the size, scope, and direction of the accredited CME/CE enterprise. This year's report, based on data submitted by accredited providers for activities that occurred in 2024, provides insights into key trends and emerging shifts across activity formats, funding sources, and learner engagement.

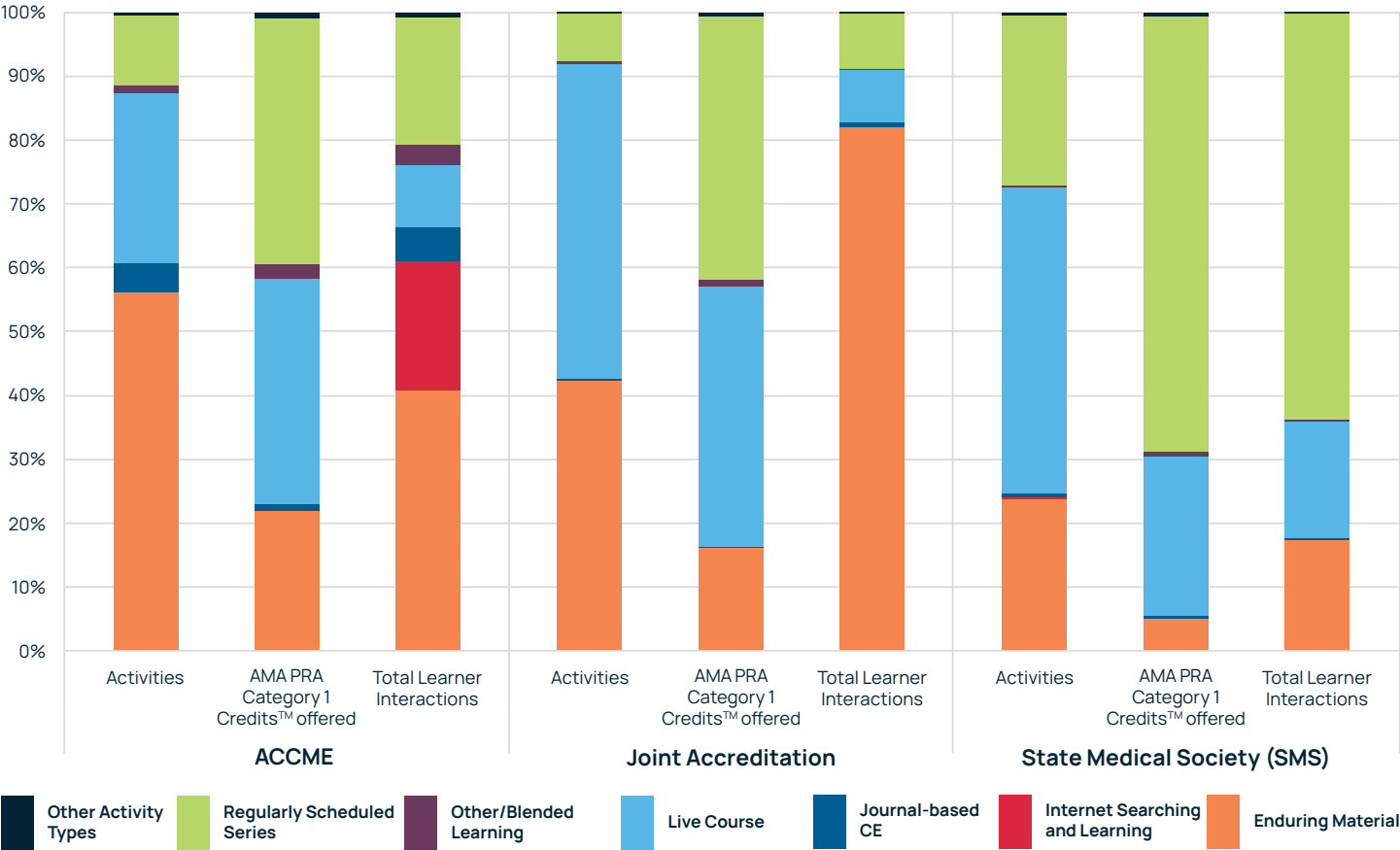
Key Findings and Trends

A GROWING AND DIVERSIFYING ENTERPRISE

Total reported income reached \$3.7 billion, the highest in the history of the accredited CME/CE system. Growth was supported by strong registration revenue and advertising and exhibit income (\$725 million), while commercial support saw a modest contraction (5% year-over-year decline).

DISTINCT DELIVERY PATTERNS BY ACCREDITOR TYPE

CME/CE Presented by Providers Accredited in the ACCME System
Activities, Credits and Learner Interactions by Accreditor and Activity Type—2024



Educational delivery formats vary across the three accreditor types. State-accredited providers providers (primarily hospitals/healthcare delivery systems) focus heavily on workplace-based education, with regularly scheduled series (RSS) accounting for 70% of credits and 65% of learner interactions. Jointly accredited (JA) providers offer a more balanced mix of formats, with enduring materials driving the highest learner engagement despite typically awarding fewer credits per activity. ACCME-accredited providers deliver the broadest range of activity types; while enduring materials represent over half of all activities and generate the most learner interactions, live courses and RSS contribute the majority of credits awarded.

Key Findings and Trends

ACTIVITY GROWTH ANCHORED BY ENDURING MATERIALS AND LIVE MEETINGS

Enduring materials accounted for nearly 46% of all activities, while live conferences contributed over 40%. These two formats continue to anchor activity volume, with each offering distinct educational value for clinicians.

THE CONTINUED ROLE OF REGULARLY SCHEDULED SERIES

Accredited providers reported 8.9 million learner interactions (16% of total) in RSS.

HIGH ENGAGEMENT IN INTERNET SEARCH AND LEARNING ACTIVITIES

Although Internet Search and Learning Activities represent less than 1% of all activities, they account for more than 7% of all learner interactions.

MULTIPLE LEARNING PATHWAYS FOR CLINICIANS

The data continue to reflect the importance of multiple educational pathways:

- Enduring online formats for accessible, flexible, deep learning.
- National live meetings for groundbreaking science and professional community building.
- Local team-based learning embedded into clinical practice through RSS.

ONGOING EXPANSION IN HIGHER-LEVEL OUTCOME MEASUREMENT

More CME/CE activities are now evaluating:

- Learner competence (95% of activities)
- Learner performance (46% of activities)
- Patient health (18% of activities)

CME/CE Presented by Providers Accredited in the ACCME System
Number of Activities by Outcome Measurement Type—2024

Outcome Measured	Measurement Type	Total	Percent of activities offered with this level of outcome measured	Of these activities, percent using objective or subjective measures
Learner Knowledge		174,511	70%	
	Objective	79,151		45%
	Subjective	111,800		64%
Learner Competence		238,333	95%	
	Objective	61,102		26%
	Subjective	184,714		78%
Learner Performance		115,915	46%	
	Objective	19,484		17%
	Subjective	95,835		83%
Patient Health		43,807	18%	
	Objective	6,500		15%
	Subjective	35,292		81%
Community/Population Health		19,938	8%	
	Objective	3,859		19%
	Subjective	15,280		77%

Key Findings and Trends

EVOLVING FUNDING MODELS AND STRUCTURAL CONSOLIDATION

CME/CE Presented by Providers Accredited in the ACCME System
Sources of Revenue 2015-2024



As the enterprise matures, provider consolidation continues, particularly within healthcare systems. Funding diversification continues, with decreasing dependence on commercial support and greater emphasis on registration, exhibits, and other income streams.

CONTINUING IMPACT OF INNOVATION AND COLLABORATION

The increase in activities and participation—particularly among jointly accredited providers—demonstrates the ongoing value of interprofessional continuing education (IPCE) and underscores how team-based learning continues to expand its reach and relevance.

LOOKING AHEAD

The ACCME System continues to grow—not just in numbers, but in impact. Through strategic innovation, increased accessibility, and a shared commitment to improving healthcare, accredited education providers are helping clinicians adapt to complex environments and advance community health.

As we release this report, we celebrate the power of collaboration and lifelong learning to drive lasting change.

CME/CE Presented by Providers Accredited in the ACCME System

CME/CE Presented by Providers Accredited in the ACCME System

Table 1. Size of the CME/CE Enterprise—2024

Total providers = 1,561

	Activities	AMA PRA Category 1 Credits™ offered ¹	Physician interactions ²	Other learner interactions ²
Enduring Material	113,730	234,262	11,126,168	25,439,818
Live Course	101,034	479,780	1,848,811	3,468,641
Regularly Scheduled Series	27,812	593,676	5,496,462	3,384,052
Journal-based CE	5,011	8,038	1,047,233	232,462
Other/Blended Learning	1,924	21,988	446,523	260,219
Performance/Quality Improvement	216	4,521	55,734	7,869
Committee Learning	135	949	4,391	2,444
Manuscript Review	207	2,140	97,473	20,276
Test-Item Writing	115	1,219	2,070	472
Internet Searching and Learning	57	659	2,614,661	1,443,014
Learning from Teaching	84	1,389	5,475	3,119
Number of Providers				
Grand total 2024	1,561	250,325	1,348,621	22,745,001
Grand total 2023 ³	1,602	247,019	1,322,728	23,696,703
Grand total 2022	1,620	230,184	1,295,731	21,415,787
Grand total 2021	1,668	203,861	1,192,625	21,738,906
Grand total 2020	1,680	171,912	n/a	18,248,620
Grand total 2019 ⁴	1,724	188,992	n/a	17,318,795
Grand total 2018 ⁵	1,763	179,158	n/a	15,457,998
Grand total 2017	1,794	162,965	n/a	15,601,498
Grand total 2016	1,833	158,707	n/a	15,164,072
Grand total 2015	1,876	148,227	n/a	14,231,863
Grand total 2014	1,908	147,024	n/a	13,599,687
Grand total 2013	1,950	138,196	n/a	13,764,896
Grand total 2012	2,000	133,620	n/a	14,319,688
Grand total 2011	2,079	132,768	n/a	13,741,621
Grand total 2010	2,144	127,880	n/a	13,814,368
Grand total 2009	2,225	143,274	n/a	13,263,920
Grand total 2008	2,329	150,370	n/a	13,230,102
Grand total 2007	2,399	162,869	n/a	11,378,052
Grand total 2006	2,413	149,884	n/a	11,391,627
Grand total 2005	2,322	134,721	n/a	10,354,460

¹Beginning in 2021, AMA PRA Category 1 Credit™ replaces Hours of Instruction.

²Accredited providers report the number of participants at each activity. In this report, the participant numbers are referred to as interactions. The data represents aggregate numbers of interactions and not the number of unique participants. Participants attending multiple activities are counted multiple times.

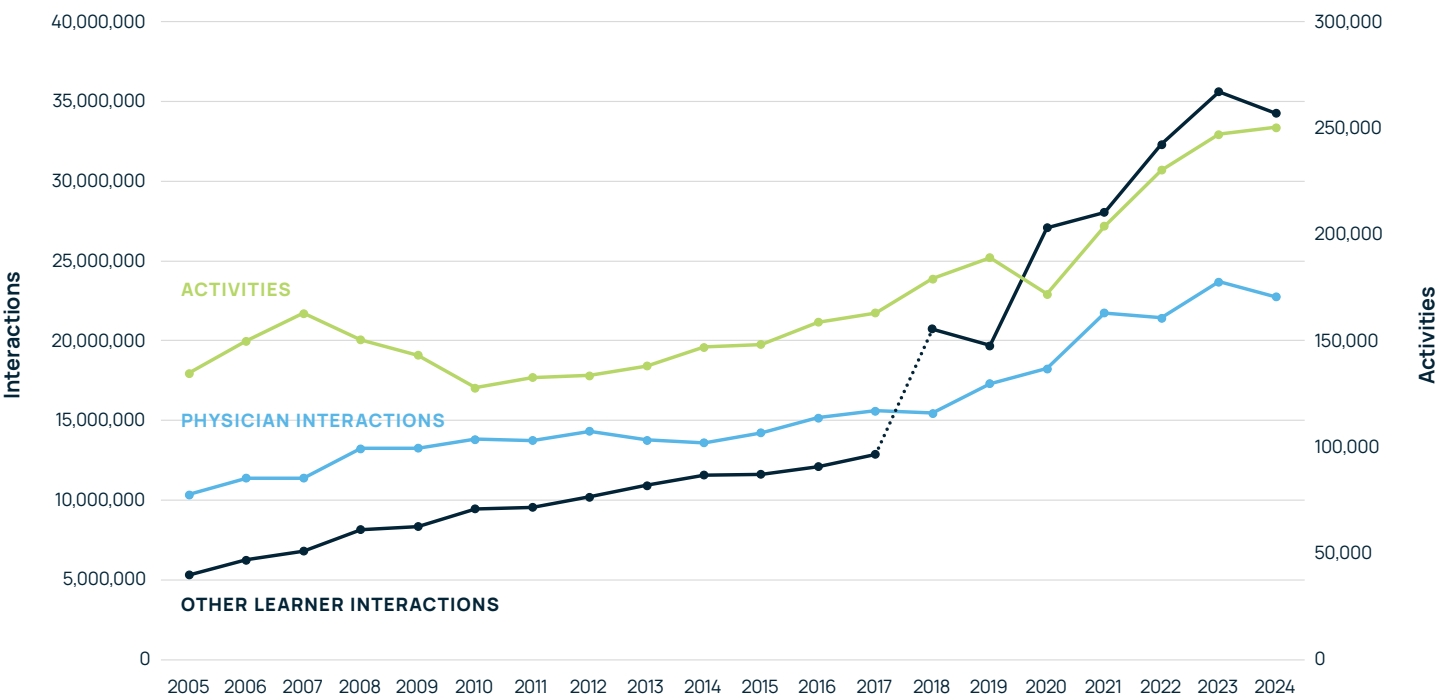
³Physician and Other Learner Interactions for 2023 have been revised in the 2024 Data Report to reflect updates received after the publication of the 2023 Data Report.

⁴Due to the COVID-19 pandemic, five accredited organizations were unable to complete their 2019 report. 2018 data was carried forward for these organizations. The data carried forward accounts for <0.1% of activity data.

⁵In 2018, the launch of the Joint Accreditation Program and Activity Reporting System (JA-PARS) enabled jointly accredited providers to report program and activity data, including uni-professional and interprofessional continuing education (IPCE) activities, into a single, unified repository. Before 2018, jointly accredited providers reported data into multiple accreditors' data systems. This change accounts for the increase in other learner interactions.

CME/CE Presented by Providers Accredited in the ACCME System

Figure 1. Activities and Interactions 2005-2024



In 2024, the decrease in the number of physician and other learner interactions can be attributed primarily to changes in reporting by a few large providers, not an overall downward trend. The overall number of activities continued on an upward trajectory in 2024.

The break in the line for other learner interactions in 2018 indicates a change in data collection. In 2018, the launch of the Joint Accreditation Program and Activity Reporting System (JA-PARS) enabled jointly accredited providers to report program and activity data, including uni-professional and interprofessional continuing education (IPCE) activities, into a single, unified repository. This change accounts for the increase in other learner interactions between 2017 and 2018.

CME/CE Presented by Providers Accredited in the ACCME System

Table 2. Activities by Organization and Activity Type—2024

Organization type ⁶	Publishing/ education company	Hospital/ healthcare delivery system	School of medicine/ health sciences	Professional membership organization	Government/ military	Voluntary health organization	Other	Insurance company/ managed care company	Grand total
Number of providers	217	723	169	327	35	40	25	25	1,561
Enduring Material	48,194	16,031	19,495	20,909	4,144	1,997	1,751	1,209	113,730
Live Course	15,020	27,927	13,524	12,667	29,086	1,210	804	796	101,034
Regularly Scheduled Series	382	15,596	10,545	321	876	31	11	50	27,812
Journal-based CE	880	384	145	3,552	2	48	-	-	5,011
Other/Blended Learning	162	491	326	907	1	26	3	8	1,924
Performance/Quality Improvement	11	128	26	37	-	-	14	-	216
Committee Learning	1	88	25	19	-	2	-	-	135
Manuscript Review	52	9	7	125	-	14	-	-	207
Test-Item Writing	-	9	62	44	-	-	-	-	115
Internet Searching and Learning	40	5	5	6	-	1	-	-	57
Learning from Teaching	8	32	15	8	-	15	6	-	84
Grand total	64,750	60,700	44,175	38,595	34,109	3,344	2,589	2,063	250,325

⁶ ACCME recategorized provider types for greater clarity—as well as consistency with Joint Accreditation—reducing reliance on “other” or “not classified” categories to better reflect the ecosystem’s structure. Definitions are listed below:

Publishing/Education Company: Organizations that develop and distribute healthcare-related educational content, tools, or resources.

Hospital/Healthcare Delivery System: Organizations that directly provide medical care, including hospitals, clinics, physician groups, and integrated health systems operating across multiple care settings.

School of Medicine/Health Sciences: Academic institutions that educate and train healthcare professionals, including physicians, nurses, and other clinical practitioners.

Professional Membership Organization: Organizations that represent healthcare professionals and focus on the professional development of their members.

Government or Military: Public agencies that provide, fund, or oversee healthcare services at the federal, state, or local level, including branches of the military.

Voluntary Health Organization: Independent, primarily donation-funded organizations that focus on health-related research, disease prevention, health education, and/or patient services.

Other: Organizations eligible for accreditation that do not fit into the categories above, such as healthcare consulting firms, staffing agencies, or private regulatory bodies.

Insurance Company/Managed Care Company: Entities that offer health or liability insurance, collect premiums, maintain claims data, and reimburse healthcare services based on policy terms.

CME/CE Presented by Providers Accredited in the ACCME System

Table 3. AMA PRA Category 1 Credits™ Offered by Organization and Activity Type—2024

Organization type	Publishing/ education company	Hospital/ healthcare delivery system	School of medicine/ health sciences	Professional membership organization	Government/ military	Voluntary health organization	Other	Insurance company/ managed care company	Grand total
Number of providers	217	723	169	327	35	40	25	25	1,561
Enduring Material	95,642	18,897	37,237	71,410	5,237	1,667	2,115	2,058	234,262
Live Course	85,227	87,336	85,019	133,519	81,097	3,493	2,535	1,555	479,780
Regularly Scheduled Series	3,200	289,348	282,435	5,938	11,935	335	409	76	593,676
Journal-based CE	1,557	754	233	5,464	3	28	-	-	8,038
Other/Blended Learning	2,583	2,766	3,770	12,089	12	684	84	2	21,988
Performance/Quality Improvement	200	2,744	504	793	-	-	-	280	4,521
Committee Learning	1	504	289	125	-	30	-	-	949
Manuscript Review	150	27	49	1,874	-	40	-	-	2,140
Test-Item Writing	-	68	679	473	-	-	-	-	1,219
Internet Searching and Learning	40	23	27	567	-	3	-	-	659
Learning from Teaching	126	930	231	34	-	30	-	38	1,389
Grand total	188,726	403,396	410,471	232,286	98,284	6,308	5,142	4,008	1,348,621

Note: Grand totals may differ slightly due to rounding.

CME/CE Presented by Providers Accredited in the ACCME System

Table 4. Physician Interactions by Organization and Activity Type—2024

Organization type	Publishing/ education company	Hospital/ healthcare delivery system	School of medicine/ health sciences	Professional membership organization	Government/ military	Voluntary health organization	Other	Insurance company/ managed care company	Grand total
Number of providers	217	723	169	327	35	40	25	25	1,561
Enduring Material	6,729,807	327,197	344,882	2,956,288	260,931	92,011	114,388	300,664	11,126,168
Live Course	566,678	328,454	277,302	564,837	63,826	24,739	10,036	12,939	1,848,811
Regularly Scheduled Series	47,158	2,544,431	2,712,642	42,627	145,549	2,219	1,006	830	5,496,462
Journal-based CE	69,837	22,708	7,510	945,483	15	1,680	-	-	1,047,233
Other/Blended Learning	6,935	8,361	8,010	422,156	55	944	59	3	446,523
Performance/Quality Improvement	25	2,694	2,203	50,255	-	-	-	557	55,734
Committee Learning	5	2,770	1,318	220	-	78	-	-	4,391
Manuscript Review	40,335	804	341	54,735	-	1,258	-	-	97,473
Test-Item Writing	-	184	803	1,083	-	-	-	-	2,070
Internet Searching and Learning	2,425,585	397	185,083	3,590	-	6	-	-	2,614,661
Learning from Teaching	759	873	116	3,626	-	15	-	86	5,475
Grand total	9,887,124	3,238,873	3,540,210	5,044,900	470,376	122,950	125,489	315,079	22,745,001

CME/CE Presented by Providers Accredited in the ACCME System

Table 5. Other Learner Interactions by Organization and Activity Type—2024

Organization type	Publishing/ education company	Hospital/ healthcare delivery system	School of medicine/ health sciences	Professional membership organization	Government/ military	Voluntary health organization	Other	Insurance company/ managed care company	Grand total
Number of providers	217	723	169	327	35	40	25	25	1,561
Enduring Material	17,970,026	908,581	709,543	1,684,202	2,256,993	1,667,556	96,035	146,882	25,439,818
Live Course	1,165,159	633,230	475,301	420,253	645,033	78,936	42,131	8,598	3,468,641
Regularly Scheduled Series	35,263	1,722,886	1,246,549	28,820	337,348	5,150	5,648	2,388	3,384,052
Journal-based CE	53,005	14,179	1,516	145,649	-	18,113	-	-	232,462
Other/Blended Learning	14,778	12,185	13,920	213,304	1,096	4,697	236	3	260,219
Performance/Quality Improvement	31	2,925	693	3,904	-	-	-	316	7,869
Committee Learning	18	2,100	263	28	-	35	-	-	2,444
Manuscript Review	13,941	527	70	5,309	-	429	-	-	20,276
Test-Item Writing	-	116	185	171	-	-	-	-	472
Internet Searching and Learning	1,441,424	559	96	900	-	35	-	-	1,443,014
Learning from Teaching	72	383	7	2,640	-	-	-	17	3,119
Grand total	20,693,717	3,297,671	2,448,143	2,505,180	3,240,470	1,774,951	144,050	158,204	34,262,386

CME/CE Presented by Providers Accredited in the ACCME System

Table 6. Income—2024

Total providers = 1,561

	Total reported income	Registration fees	Commercial support	Advertising and exhibits income	Private donations	Government grants
Average	\$2,343,324	\$1,293,186	\$522,189	\$464,214	\$23,103	\$40,631
First quartile ⁷	\$-	\$-	\$-	\$-	\$-	\$-
Second quartile (median) ⁷	\$63,499	\$5,625	\$-	\$-	\$-	\$-
Third quartile ⁷	\$923,835	\$279,165	\$15,000	\$114,250	\$-	\$-
Total	\$3,657,928,171	\$2,018,663,450	\$815,136,598	\$724,638,779	\$36,063,657	\$63,425,687
Providers reporting data > \$0	999	858	475	675	307	179

⁷The percentage of providers reporting data for some of the financial categories is less than needed to report some of the quartile values.

CME/CE Presented by Providers Accredited in the ACCME System

Table 7. Income by Organization Type—2024

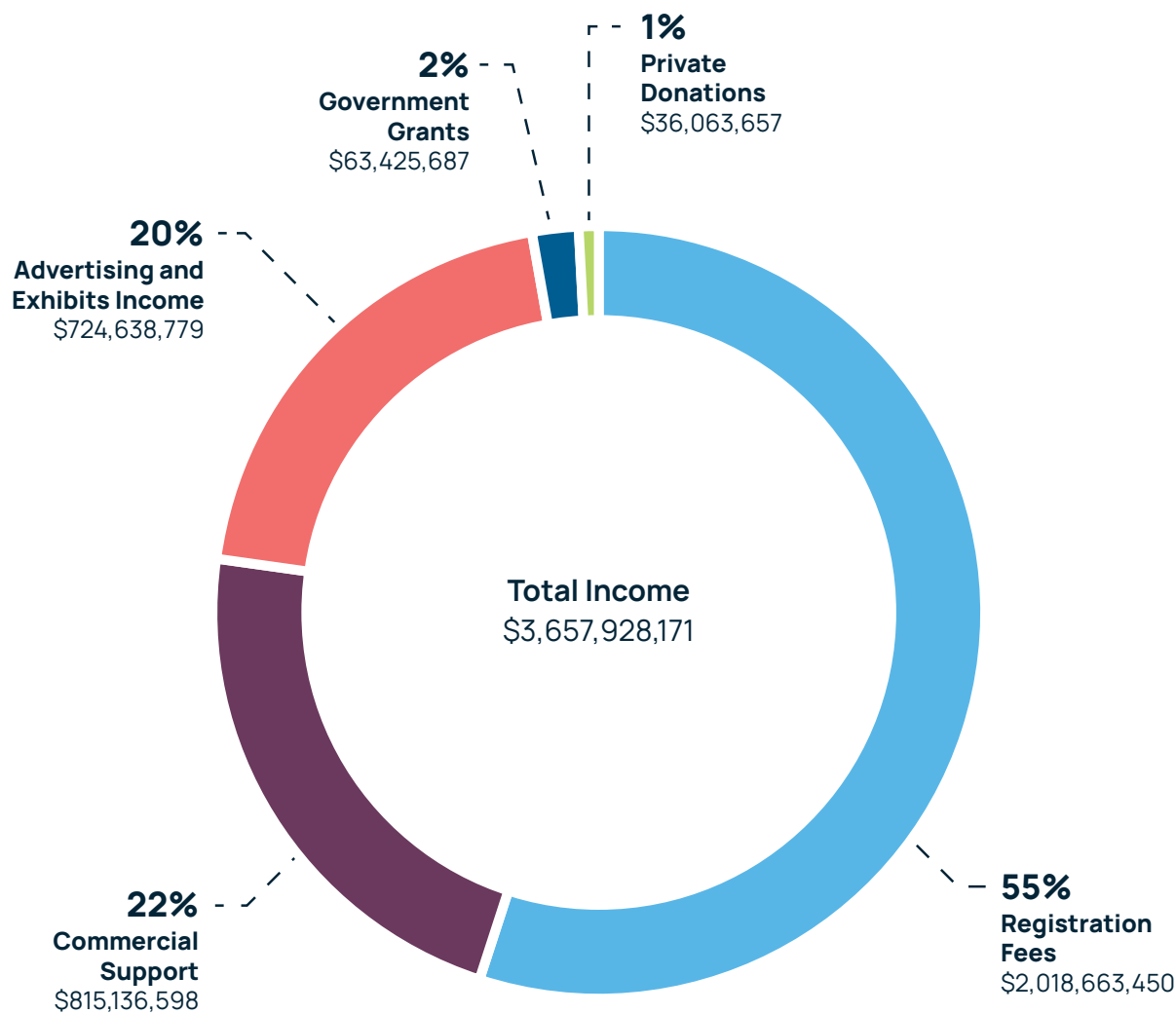
	Number of providers	Total reported income	Registration fees	Commercial support	Advertising and exhibits income	Private donations	Government grants
Publishing/Education Company	217	\$1,738,699,198	\$996,197,259	\$615,826,906	\$118,615,358	\$1,436,856	\$6,622,819
Hospital/Healthcare Delivery System	723	\$116,530,320	\$36,237,400	\$16,368,557	\$39,754,585	\$12,104,978	\$12,064,800
School of Medicine/Health Sciences	169	\$362,710,140	\$173,138,232	\$75,455,876	\$89,493,393	\$4,622,727	\$19,999,911
Professional Membership Organization	327	\$1,279,639,667	\$707,719,062	\$85,982,030	\$449,872,368	\$15,819,876	\$20,246,331
Government/Military	35	\$1,619,954	\$1,193,440	\$40,000	\$178,575	\$10,000	\$197,940
Voluntary Health Organization	40	\$138,354,709	\$90,378,012	\$18,451,537	\$24,387,656	\$2,023,719	\$3,113,784
Other	25	\$16,567,668	\$12,520,806	\$1,053,964	\$1,767,295	\$45,500	\$1,180,103
Insurance Company/Managed Care Company	25	\$3,806,514	\$1,279,239	\$1,957,728	\$569,547	\$-	\$-
Grand total 2024	1,561	\$3,657,928,171	\$2,018,663,450	\$815,136,598	\$724,638,779	\$36,063,657	\$63,425,687
Grand total 2023	1,602	\$3,536,834,032	\$1,909,611,692	\$858,011,204	\$668,343,414	\$31,092,090	\$69,775,633
Grand total 2022	1,620	\$3,387,101,116	\$1,771,896,905	\$893,914,671	\$639,598,238	\$29,789,683	\$51,901,619
Grand total 2021	1,668	\$2,812,073,839	\$1,472,168,635	\$895,031,740	\$367,537,237	\$24,346,525	\$52,989,702
Grand total 2020	1,680	\$2,243,627,062	\$1,249,200,596	\$722,774,042	\$219,679,012	\$14,558,799	\$37,414,614
Grand total 2019	1,724	\$3,058,907,317	\$1,675,099,910	\$776,597,793	\$542,056,113	\$25,773,624	\$39,379,877
Grand total 2018	1,763	\$2,833,569,300	\$1,527,559,796	\$748,302,064	\$499,052,494	\$26,744,928	\$31,910,017
Grand total 2017	1,794	\$2,682,821,566	\$1,449,460,937	\$739,331,934	\$434,718,810	\$30,517,214	\$28,792,671
Grand total 2016	1,833	\$2,515,804,249	\$1,342,942,668	\$704,132,877	\$411,220,086	\$33,148,454	\$24,360,164
Grand total 2015	1,876	\$2,464,326,269	\$1,309,421,232	\$693,786,396	\$389,961,753	\$36,371,537	\$34,785,352

Note: Grand totals may differ slightly due to rounding.

CME/CE Presented by Providers Accredited in the ACCME System

Figure 2. Total Income—2024

Total Income is \$3,657,928,171



In 2024, registration fees comprised 55% of reported income. Commercial support accounted for 22%, advertising and exhibits income for 20%, government grants for 2%, and private donations for 1%.

CME/CE Presented by Providers Accredited in the ACCME System

Table 8. CME/CE Activities and Interactions with and without Commercial Support – 2024

Total providers = 1,561

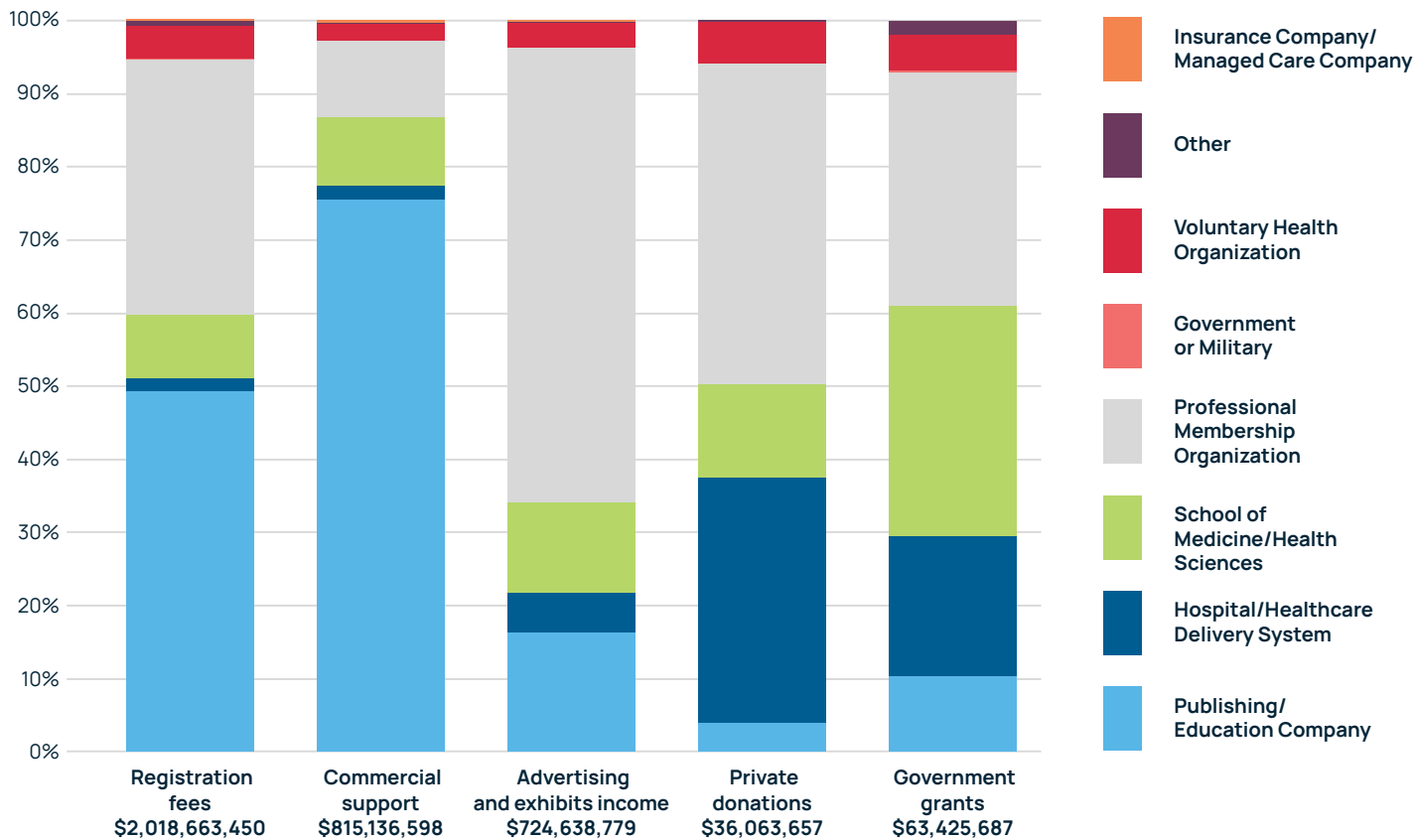
	Activities		Physician interactions		Other learner interactions	
	Count	%	Count	%	Count	%
No commercial support	232,832	93%	17,702,332	78%	29,250,076	85%
ACCME-accredited providers	91,035		11,108,910		7,016,818	
Jointly accredited providers	111,650		4,981,944		20,824,828	
State-accredited providers	30,147		1,611,478		1,408,430	
Commercial support	17,493	7%	5,042,669	22%	5,012,310	15%
ACCME-accredited providers	5,907		1,044,215		807,602	
Jointly accredited providers	12,210		3,985,142		4,188,602	
State-accredited providers	208		13,312		16,106	
Total	250,325	100%	22,745,001	100%	34,262,386	100%

In 2024, the majority of CME/CE activities (93%) did not receive commercial support, accounting for 78% of physician interactions and 85% of other learner interactions. Seven percent of CME/CE activities received commercial support, accounting for 22% of physician interactions and 15% of other learner interactions.

CME/CE Presented by Providers Accredited in the ACCME System

Figure 3. Income by Organization Type—2024

Total Income is \$3,657,928,171



In 2024, the total income from CME/CE presented by providers accredited in the ACCME System was \$3,657,928,171.

Registration fees comprised 55% of the total income in 2024 (\$2,018,663,450). Of this amount, the majority of income was generated by publishing/education companies, followed by professional membership organizations, schools of medicine/health sciences, voluntary health organizations, hospital/healthcare delivery systems, and other providers.

Commercial support comprised 22% of the total income in 2024 (\$815,136,598). Of this amount, the majority of income was generated by publishing/education companies, followed by professional membership organizations, schools of medicine/health sciences, voluntary health organizations, hospital/healthcare delivery systems, and insurance/managed care companies.

Advertising and exhibits income comprised 20% of the total income in 2024 (\$724,638,779). Of this amount, the majority of income was generated by professional membership organizations, followed by publishing/education companies, schools of medicine/health sciences, hospital/healthcare delivery systems, voluntary health organizations, and other providers.

Private donations comprised 1% of the total income in 2024 (\$36,063,657). Of this amount, the majority of income was generated by professional membership organizations, hospital/healthcare delivery systems, schools of medicine/health sciences, voluntary health organizations, and publishing/education companies.

Government grants comprised 2% of the total income in 2024 (\$63,425,687). Of this amount, the majority of income was generated by professional membership organizations, schools of medicine/health sciences, hospital/healthcare delivery systems, publishing/education companies, voluntary health organizations, and other providers.

CME/CE Outcomes Data

CME/CE Presented by Providers Accredited in the ACCME System

Table 9. Number of Activities by Outcome Measurement Type—2024

Outcome Measured	Measurement Type	Total	Percent of activities offered with this level of outcome measured	Of these activities, percent using objective or subjective measures
Learner Knowledge		174,511	70%	
	Objective	79,151		45%
	Subjective	111,800		64%
Learner Competence		238,333	95%	
	Objective	61,102		26%
	Subjective	184,714		78%
Learner Performance		115,915	46%	
	Objective	19,484		17%
	Subjective	95,835		83%
Patient Health		43,807	18%	
	Objective	6,500		15%
	Subjective	35,292		81%
Community/Population Health		19,938	8%	
	Objective	3,859		19%
	Subjective	15,280		77%

For each activity, providers must measure outcomes in terms of learner competence, learner performance, patient health, and/or community population health. Therefore, more than one outcome can be measured. These outcomes can be measured objectively (for example, observed or tested), and/or subjectively (for example, self-reported).

CME Presented by ACCME-Accredited Providers Only

CME Presented by ACCME-Accredited Providers Only

Table 10. Size of the CME Enterprise—2024

Total providers = 635

Directly Provided	Activities	AMA PRA Category 1 Credits™ offered ⁸	Physician interactions	Other learner interactions	
Enduring Material	40,528	113,978	3,848,660	2,922,450	
Live Course	19,835	188,411	762,463	809,221	
Regularly Scheduled Series	9,386	241,267	2,507,243	1,156,095	
Journal-based CE	4,099	6,317	851,883	133,104	
Other/Blended Learning	923	12,623	378,250	188,954	
Performance/Quality Improvement	134	3,007	16,998	4,281	
Committee Learning	84	633	3,159	1,778	
Manuscript Review	167	1,982	79,554	19,238	
Test-Item Writing	20	207	315	233	
Internet Searching and Learning	42	35	2,428,542	1,441,228	
Learning from Teaching	32	138	4,169	2,478	
Total	75,250	568,596	10,881,236	6,679,060	
Jointly Provided	Activities	AMA PRA Category 1 Credits™ offered ⁸	Physician interactions	Other learner interactions	
Enduring Material	13,814	35,077	566,314	821,466	
Live Course	5,998	52,631	204,626	199,304	
Regularly Scheduled Series	1,166	21,644	192,443	103,564	
Journal-based CE	280	460	50,388	1,675	
Other/Blended Learning	240	2,725	36,148	17,708	
Performance/Quality Improvement	10	230	34,537	187	
Committee Learning	-	-	-	-	
Manuscript Review	5	37	338	52	
Test-Item Writing	21	225	832	120	
Internet Searching and Learning	7	592	185,554	1,027	
Learning from Teaching	10	71	709	257	
Total	21,551	113,691	1,271,889	1,145,360	
Number of Providers					
Grand total 2024	635	96,801	682,287	12,153,125	7,824,420

See next page for previous years.

⁸Beginning in 2021, AMA PRA Category 1 Credit™ replaces Hours of Instruction.

CME Presented by ACCME-Accredited Providers Only (cont.)

Table 10. Size of the CME Enterprise—2024

Total providers = 635

	Number of Providers	Activities	AMA PRA Category 1 Credits™ offered ⁸	Physician interactions	Other learner interactions
Grand total 2023	628	101,999	672,645	12,114,491	7,108,545
Grand total 2022	628	99,949	701,177	12,931,419	9,358,005
Grand total 2021	640	98,194	666,276	14,261,475	7,527,543
Grand total 2020	639	85,929	n/a	11,913,707	7,604,566
Grand total 2019	627	96,663	n/a	11,601,562	7,090,738
Grand total 2018	628	112,490	n/a	10,152,596	6,872,284
Grand total 2017	688	125,602	n/a	13,474,393	11,033,954
Grand total 2016	686	121,441	n/a	12,996,914	10,369,627
Grand total 2015	690	111,333	n/a	12,047,714	9,838,392
Grand total 2014	683	106,421	n/a	11,471,969	9,764,749
Grand total 2013	677	96,247	n/a	11,518,856	8,960,044
Grand total 2012	681	92,092	n/a	11,952,246	8,521,479
Grand total 2011	687	88,178	n/a	11,351,125	7,938,497
Grand total 2010	694	81,543	n/a	11,433,737	7,855,897
Grand total 2009	707	95,062	n/a	10,780,093	6,782,681
Grand total 2008	728	100,935	n/a	10,678,562	6,571,594
Grand total 2007	736	113,003	n/a	8,698,299	5,177,299
Grand total 2006	729	93,582	n/a	8,255,017	4,577,078
Grand total 2005	716	79,820	n/a	7,650,207	3,683,749

⁸Beginning in 2021, AMA PRA Category 1 Credit™ replaces Hours of Instruction.

CME Presented by ACCME-Accredited Providers Only

Table 11. Income by Organization Type—2024

	Number of providers	Total reported income	Registration fees	Commercial support	Advertising and exhibits income	Private donations	Government grants
Publishing/Education Company	139	\$1,067,153,560	\$868,756,841	\$156,281,495	\$39,101,169	\$1,039,829	\$1,974,227
Hospital/Healthcare Delivery System	95	\$31,411,250	\$9,449,627	\$6,196,368	\$13,652,277	\$1,458,824	\$654,154
School of Medicine/ Health Sciences	118	\$206,820,350	\$78,088,474	\$55,015,844	\$57,230,367	\$3,128,601	\$13,357,063
Professional Membership Organization	237	\$1,129,540,641	\$627,181,752	\$69,656,883	\$407,663,123	\$14,281,567	\$10,757,315
Government/Military	6	\$231,715	\$191,715	\$40,000	\$-	\$-	\$-
Voluntary Health Organization	15	\$33,321,224	\$16,304,796	\$6,296,022	\$9,876,610	\$250,002	\$593,793
Other	10	\$8,811,047	\$6,685,682	\$322,570	\$1,767,295	\$35,500	\$-
Insurance Company/ Managed Care Company	15	\$3,806,175	\$1,278,900	\$1,957,728	\$569,547	\$-	\$-
Grand total 2024	635	\$2,481,095,961	\$1,607,937,786	\$295,766,910	\$529,860,389	\$20,194,324	\$27,336,552
Grand total 2023	628	\$2,400,379,968	\$1,538,890,942	\$311,038,005	\$491,799,896	\$23,064,614	\$35,586,511
Grand total 2022	628	\$2,285,423,282	\$1,406,924,521	\$390,900,215	\$442,646,416	\$19,508,166	\$25,443,965
Grand total 2021	640	\$1,934,464,704	\$1,207,495,939	\$419,348,089	\$263,114,893	\$17,838,166	\$26,667,618
Grand total 2020	639	\$1,630,099,833	\$1,023,084,790	\$419,551,254	\$150,740,516	\$11,611,345	\$25,111,927
Grand total 2019	627	\$2,353,686,520	\$1,384,361,879	\$501,841,206	\$423,317,607	\$18,764,253	\$25,401,574
Grand total 2018	628	\$2,250,181,569	\$1,296,589,350	\$501,841,239	\$414,917,203	\$19,061,521	\$17,772,256
Grand total 2017	688	\$2,612,163,093	\$1,422,058,248	\$731,109,049	\$414,595,971	\$23,123,302	\$21,276,523
Grand total 2016	686	\$2,448,762,290	\$1,315,859,811	\$696,022,425	\$392,580,854	\$26,799,016	\$17,500,183
Grand total 2015	690	\$2,392,605,010	\$1,282,477,849	\$684,678,701	\$373,138,523	\$29,665,302	\$22,644,636

Note: Grand totals may differ slightly due to rounding.

CME Presented by State-Accredited Providers Only

CME Presented by State-Accredited Providers Only

Table 12. Size of the CME Enterprise—2024

Total providers = 739

Directly Provided	Activities	AMA PRA Category 1 Credits™ offered ⁹	Physician interactions	Other learner interactions
Enduring Material	6,672	9,092	127,174	366,430
Live Course	12,799	41,547	224,397	238,250
Regularly Scheduled Series	7,571	130,318	1,146,075	673,459
Journal-based CE	238	624	3,566	2,031
Other/Blended Learning	75	1,287	3,343	5,187
Performance/Quality Improvement	46	762	944	278
Committee Learning	36	196	780	528
Manuscript Review	-	-	-	-
Test-Item Writing	3	7	47	64
Internet Searching and Learning	3	22	384	555
Learning from Teaching	23	272	249	381
Total	27,466	184,127	1,506,959	1,287,163
Jointly Provided	Activities	AMA PRA Category 1 Credits™ offered ⁹	Physician interactions	Other learner interactions
Enduring Material	586	1,562	16,497	20,743
Live Course	1,721	9,784	32,041	63,113
Regularly Scheduled Series	555	9,923	68,924	51,253
Journal-based CE	8	8	27	74
Other/Blended Learning	11	122	335	2,155
Performance/Quality Improvement	-	-	-	-
Committee Learning	-	-	-	-
Manuscript Review	-	-	-	-
Test-Item Writing	-	-	-	-
Internet Searching and Learning	1	3	6	35
Learning from Teaching	1	4	1	-
Total	2,883	21,404	117,831	137,373
Number of Providers				
Grand total 2024	739	30,349	205,531	1,624,790
			1,624,790	1,424,536

See next page for previous years.

⁹Beginning in 2021, AMA PRA Category 1 Credit™ replaces Hours of Instruction.

CME Presented by State-Accredited Providers Only

Table 12. Size of the CME Enterprise—2024

Total providers = 739

	Number of Providers	Activities	AMA PRA Category 1 Credits™ offered ⁹	Physician interactions	Other learner interactions
Grand total 2023	805	31,086	209,599	1,619,292	1,634,700
Grand total 2022	846	30,371	211,070	1,855,761	1,431,547
Grand total 2021	896	29,387	214,324	1,854,282	1,414,954
Grand total 2020	928	28,494	n/a	1,658,393	1,235,818
Grand total 2019	1,010	37,093	n/a	2,031,045	1,495,375
Grand total 2018	1,060	37,039	n/a	2,100,461	1,601,897
Grand total 2017	1,106	37,363	n/a	2,127,105	1,852,385
Grand total 2016	1,147	37,266	n/a	2,167,158	1,752,483
Grand total 2015	1,186	36,894	n/a	2,184,149	1,801,863
Grand total 2014	1,225	40,603	n/a	2,127,718	1,822,769
Grand total 2013	1,273	41,949	n/a	2,246,040	1,969,173
Grand total 2012	1,319	41,528	n/a	2,367,442	1,685,758
Grand total 2011	1,392	44,590	n/a	2,390,496	1,620,292
Grand total 2010	1,450	46,337	n/a	2,380,631	1,608,998
Grand total 2009	1,518	48,212	n/a	2,483,827	1,569,361
Grand total 2008	1,601	49,435	n/a	2,551,540	1,601,348
Grand total 2007	1,663	49,866	n/a	2,679,753	1,627,279
Grand total 2006	1,684	56,302	n/a	3,136,610	1,682,420
Grand total 2005	1,606	54,901	n/a	2,704,253	1,637,699

⁹Beginning in 2021, AMA PRA Category 1 Credit™ replaces Hours of Instruction.

CME Presented by State-Accredited Providers Only

Table 13. Income by Organization Type—2024

	Number of providers	Total reported income	Registration fees	Commercial support	Advertising and exhibits income	Private donations	Government grants
Publishing/Education Company	21	\$6,505,815	\$1,934,877	\$102,943	\$1,088,388	\$40,456	\$3,339,151
Hospital/Healthcare Delivery System	579	\$30,169,308	\$10,109,280	\$2,922,533	\$10,366,767	\$3,740,615	\$3,030,113
School of Medicine/ Health Sciences	15	\$4,865,866	\$2,368,698	\$8,500	\$355,615	\$269,267	\$1,863,786
Professional Membership Organization	69	\$25,569,117	\$6,923,751	\$1,478,890	\$11,009,405	\$409,753	\$5,747,317
Government/Military	21	\$1,384,640	\$998,125	\$-	\$178,575	\$10,000	\$197,940
Voluntary Health Organization	16	\$12,184,419	\$1,963,239	\$218,300	\$5,982,048	\$1,588,717	\$2,432,115
Other	9	\$377,500	\$-	\$17,500	\$-	\$10,000	\$350,000
Insurance Company/ Managed Care Company	9	\$340	\$340	\$-	\$-	\$-	\$-
Grand total 2024	739	\$81,057,005	\$24,298,311	\$4,748,666	\$28,980,799	\$6,068,808	\$16,960,422
Grand total 2023	805	\$65,859,945	\$22,491,400	\$3,911,980	\$22,892,182	\$4,008,486	\$12,555,898
Grand total 2022	846	\$64,012,297	\$17,368,668	\$4,518,833	\$19,097,658	\$7,439,674	\$15,587,464
Grand total 2021	896	\$51,399,799	\$14,841,353	\$6,100,174	\$9,956,666	\$4,964,311	\$15,537,295
Grand total 2020	928	\$35,464,737	\$11,618,828	\$5,049,511	\$8,857,645	\$1,953,036	\$7,985,717
Grand total 2019	1,010	\$74,990,660	\$28,256,965	\$7,638,257	\$24,692,262	\$5,213,763	\$9,189,413
Grand total 2018	1,060	\$75,154,724	\$30,511,580	\$7,329,750	\$23,100,129	\$6,015,253	\$8,198,012
Grand total 2017	1,106	\$70,658,473	\$27,402,689	\$8,222,885	\$20,122,839	\$7,393,912	\$7,516,148
Grand total 2016	1,147	\$67,041,959	\$27,082,857	\$8,110,452	\$18,639,231	\$6,349,438	\$6,859,981
Grand total 2015	1,186	\$71,721,259	\$26,943,383	\$9,107,695	\$16,823,230	\$6,706,235	\$12,140,716

Note: Grand totals may differ slightly due to rounding.

CE Presented by Jointly Accredited Providers Only

CE Presented by Jointly Accredited Providers Only

Table 14. Size of the CE Enterprise—2024

Total providers = 187

Directly Provided	Activities	AMA PRA Category 1 Credits™ offered ¹⁰	Total learner interactions
Enduring Material	42,858	53,223	26,029,042
Live Course	52,046	132,230	2,277,442
Regularly Scheduled Series	8,371	176,645	2,770,303
Journal-based CE	243	435	124,386
Other/Blended Learning	562	3,948	65,113
Performance/Quality Improvement	24	482	4,651
Committee Learning	13	119	527
Manuscript Review	35	121	18,567
Test-Item Writing	64	701	731
Internet Searching and Learning	2	6	217
Learning from Teaching	18	904	350
Total	104,236	368,814	31,291,329
Jointly Provided	Activities	AMA PRA Category 1 Credits™ offered ¹⁰	Total learner interactions
Enduring Material	9,272	21,329	1,847,210
Live Course	8,635	55,177	506,595
Regularly Scheduled Series	763	13,880	211,155
Journal-based CE	143	194	112,561
Other/Blended Learning	113	1,285	9,549
Performance/Quality Improvement	2	40	1,727
Committee Learning	2	2	63
Manuscript Review	-	-	-
Test-Item Writing	7	80	200
Internet Searching and Learning	2	2	127
Learning from Teaching	-	-	-
Total	18,939	91,989	2,689,187
Number of Providers			
Grand total 2024	187	123,175	460,803
Grand total 2023	169	113,934	440,485
Grand total 2022	146	99,864	383,484
Grand total 2021	132	76,280	312,025
Grand total 2020	113	57,489	n/a
Grand total 2019	87	55,236	n/a
Grand total 2018	75	29,629	n/a

¹⁰ Beginning in 2021, AMA PRA Category 1 Credit™ replaces Hours of Instruction.

¹¹ Increase in learner interactions from 2022 to 2023 is partially due to several large accredited providers improving their technical infrastructure which allows them to report learners who have completed activities even if CE credit was not claimed. Previously, those accredited providers had reported learners only if CE credit was claimed.

CE Presented by Jointly Accredited Providers Only

Table 15. Income by Organization Type—2024

	Number of providers	Total reported income	Registration fees	Total commercial support	Advertising and exhibits income	Private donations	Government grants
Publishing/Education Company	57	\$665,039,824	\$125,505,541	\$459,442,468	\$78,425,802	\$356,572	\$1,309,441
Hospital/Healthcare Delivery System	49	\$54,949,761	\$16,678,493	\$7,249,656	\$15,735,541	\$6,905,539	\$8,380,533
School of Health Sciences/Medicine	36	\$151,023,924	\$92,681,060	\$20,431,532	\$31,907,411	\$1,224,859	\$4,779,062
Non-profit (Membership Organization)	21	\$124,529,910	\$73,613,558	\$14,846,257	\$31,199,840	\$1,128,556	\$3,741,699
Government or Military	8	\$3,600	\$3,600	\$-	\$-	\$-	\$-
Non-profit (Other)	9	\$92,849,066	\$72,109,978	\$11,937,215	\$8,528,998	\$185,000	\$87,875
Other	7	\$7,379,121	\$5,835,124	\$713,894	\$-	\$-	\$830,103
Grand total 2024	187	\$1,095,775,205	\$386,427,353	\$514,621,022	\$165,797,591	\$9,800,525	\$19,128,713
Grand total 2023	169	\$1,070,594,119	\$348,229,350	\$543,061,219	\$153,651,335	\$4,018,989	\$21,633,225
Grand total 2022	146	\$1,037,665,537	\$347,603,716	\$498,495,623	\$177,854,164	\$2,841,844	\$10,870,190
Grand total 2021	132	\$826,209,336	\$249,831,344	\$469,583,477	\$94,465,678	\$1,544,048	\$10,784,789
Grand total 2020	113	\$578,062,492	\$214,496,978	\$298,173,276	\$60,080,851	\$994,418	\$4,316,970
Grand total 2019	87	\$630,230,138	\$262,481,065	\$267,118,330	\$94,046,244	\$1,795,608	\$4,788,891
Grand total 2018	75	\$508,233,007	\$200,458,867	\$239,131,076	\$61,035,162	\$1,668,154	\$5,939,749

Note: Grand totals may differ slightly due to rounding.