



ACCME® 2011 Annual Report Data

Each year, accredited providers within the Accreditation Council for Continuing Medical Education (ACCME) system submit information describing their overall continuing medical education (CME) program. This information includes data about the numbers and formats of CME activities, the hours of instruction, the numbers of physician and nonphysician participants, and some financial information. From this information, the ACCME produces annual data reports as a service to accredited providers and other stakeholders.

Expanded Annual Report Data: The 2011 Annual Report Data is expanded from previous years in order to provide a more comprehensive view of the size and scope of the ACCME accreditation system. The first section features aggregated state and national statistics, including total numbers of accredited CME providers, activities, hours of instruction, and participants. The second and third sections feature separate data sets about the CME delivered by ACCME-accredited providers and by state-accredited providers, offering an overview of the CME system at both the national and state levels.

The third section, CME Presented by ACCME-Accredited Providers Only, includes an overview of commercial support distribution by numbers and types of activities, hours of instruction, and participants. The ACCME is able to publish this data because of the [Program and Activity Reporting System \(PARS\)](#). Launched in 2010, PARS is a Web-based portal designed to centralize and streamline the collection, management, and analysis of program and activity data from accredited CME providers. The structure of PARS enables the ACCME to present detailed information from ACCME-accredited providers about individual CME activities as well as their overall CME programs. The 2011 annual report is the second one compiled from data submitted through PARS.

Commercial Support Reporting: Through 2010, ACCME-accredited and state-accredited providers reported the monetary value of in-kind commercial support they received, and included that amount in their total commercial support numbers. Beginning in 2011, due to a modification in ACCME commercial support reporting requirements, accredited providers no longer included the monetary value of in-kind support and reported only the dollar values for funds actually received. The nature (required) and source (optional) of in-kind commercial support is now reported qualitatively. Examples of in-kind commercial support include equipment, supplies, facilities, and other nonmonetary resources provided by a commercial interest in support of the CME activity. Therefore, comparisons between 2011 commercial support numbers and previous years will not be valid. For more information about this modification, please see the [March 2011 ACCME Board of Directors Meeting Executive Summary](#).

Annual Report Data Preparation: The aggregated information published in this annual report is based upon self-reporting by individual ACCME-accredited provider organizations. The accuracy and relevance of the responses may vary depending on the accredited providers' interpretation of questions and categorization of activity formats. The ACCME does not provide full verification of the accuracy of all reported information. The ACCME compares the data to the prior year's data and investigates significant differences at the individual provider level. The ACCME also investigates if it appears that providers have reported activity data that does not conform with ACCME's definitions and reporting instructions. In some circumstances, accredited providers may submit new data to correct data entry errors.

The information about state-accredited providers included in this annual report data is collected, reviewed, and submitted to the ACCME by state medical societies. (The ACCME recognizes state and territory medical societies as accreditors for providers that offer CME primarily to learners from their state or contiguous states.)

A glossary of terms and definitions used in the 2011 Annual Report Data is included on page 30. To review Annual Report Data for the years 1998-2010, please visit the ACCME Web site (www.accme.org).



ACCME® Annual Report Data 2011

The following tables and charts present the aggregated results of the 2011 activity and program data submitted by ACCME-accredited and state-accredited providers.

Combined Data: CME Presented by ACCME-Accredited and State-Accredited Providers:

Table 1.1	Size of the CME Enterprise
Table 1.2	Activities by Organization and Activity Type
Table 1.3	Hours of Instruction by Organization and Activity Type
Table 1.4	Physician Participants by Organization and Activity Type
Table 1.5	Nonphysician Participants by Organization and Activity Type
Table 1.6	Income and Expense
Table 1.7	Income and Expense by Organization Type

CME Presented by State-Accredited Providers Only:

Table 2.1	Size of the CME Enterprise
Table 2.2	Activities by Organization and Activity Type
Table 2.3	Hours of Instruction by Organization and Activity Type
Table 2.4	Physician Participants by Organization and Activity Type
Table 2.5	Nonphysician Participants by Organization and Activity Type
Table 2.6	Income and Expense
Table 2.7	Income and Expense by Organization Type

CME Presented by ACCME-Accredited Providers Only:

Table 3.1	Size of the CME Enterprise
Table 3.2	Activities by Organization and Activity Type
Table 3.3	Hours of Instruction by Organization and Activity Type
Table 3.4	Physician Participants by Organization and Activity Type
Table 3.5	Nonphysician Participants by Organization and Activity Type
Table 3.6	Income and Expense
Table 3.7	Income and Expense by Organization Type
Table 3.8	ACCME-accredited Providers by Organization Type 1998-2011
Figure 3.1	CME Enterprise Revenue and Expense, 1998-2011
Figure 3.2	Distribution of Commercial Support Among ACCME-Accredited Providers
Figure 3.3	Commercial Support by Provider Type
Table 3.9	CME Activities and Participants with/without Commercial Support
Table 3.10	Total Numbers of Activities, Hours, and Participants
Table 3.11	Numbers of Activities, Hours, and Participants with Commercial Support
Table 3.12	Numbers of Activities, Hours, and Participants without Commercial Support

ACCME Terms, Definitions and Descriptors



Combined Data: CME Presented by ACCME-Accredited and State-Accredited Providers
Table 1.1. Size of the CME Enterprise – 2011
n=2079

	Activities	Hours of instruction	Physician participants	Nonphysician participants
Directly sponsored				
Courses	49,644	287,793	1,673,014	1,266,615
Regularly scheduled series	20,780	416,814	4,403,799	2,092,652
Internet (live)	1,676	4,942	48,258	149,009
Test-item writing	85	496	755	3
Committee learning	571	1,596	8,591	3,279
Performance improvement	442	5,994	29,308	6,970
Internet searching and learning	575	1,633	85,869	4,303
Internet (enduring materials)	18,569	39,163	3,568,207	4,090,268
Enduring materials (other)	6,310	33,471	1,131,683	469,945
Learning from teaching	645	2,135	3,837	2,377
Journal CME	3,537	6,022	883,972	229,636
Manuscript review	71	231	35,698	704
Total	102,905	800,289	11,872,991	8,315,761
Jointly sponsored				
Courses	16,865	97,088	425,286	351,732
Regularly scheduled series	1,986	34,226	298,359	186,648
Internet (live)	402	1,202	16,395	17,398
Test-item writing	47	501	656	152
Committee learning	27	135	504	27
Performance Improvement	60	1,143	14,967	522
Internet searching and learning	12	2,247	6,245	405
Internet (enduring materials)	9,055	8,666	807,188	557,019
Enduring materials (other)	787	6,078	67,884	19,798
Learning from teaching	20	307	285	347
Journal CME	599	849	230,174	108,333
Manuscript review	3	7	687	647
Total	29,863	152,447	1,868,630	1,243,028

	# of Providers				
Grand total 2011	2,079	132,768	952,736	13,741,621	9,558,789
Grand total 2010¹	2,144	127,880	954,204	13,814,368	9,464,895
Grand total 2009	2,225	143,274	989,613	13,263,920	8,352,042
Grand total 2008	2,329	150,370	1,091,851	13,230,102	8,172,942
Grand total 2007	2,399	162,869	1,085,567	11,378,052	6,804,578
Grand total 2006	2,413	149,884	1,061,859	11,391,627	6,259,498
Grand total 2005	2,322	134,721	1,036,930	10,354,460	5,321,448

Note: Totals may be off due to rounding.

¹ The transition to collecting activity data in PARS for ACCME-accredited providers in 2010 caused a significant change in providers' interpretation of reporting requirements for various activity formats.



Combined Data: CME Enterprise Presented by ACCME-Accredited and State-Accredited Providers

Table 1.2. Activities by Organization and Activity Type - 2011

Organization type # of Providers	Government or military	Hospital / health care delivery system	Insurance company / managed- care company	Nonprofit (other)	Nonprofit (physician membership organization)	Not classified	Publishing / education company	School of medicine	Grand total
Directly sponsored	41	1,210	28	106	362	76	132	124	2,079
Courses	2,511	24,414	1,915	1,578	5,169	1,477	4,811	7,769	49,644
Regularly scheduled series	153	13,784	99	262	71	171	32	6,208	20,780
Internet (live)	193	312	42	241	324	105	340	119	1,676
Test-item writing	0	30	0	0	55	0	0	0	85
Committee learning	8	378	172	3	7	2	1	0	571
Performance improvement	0	250	5	6	67	14	46	54	442
Internet searching and learning	2	480	0	1	4	5	33	50	575
Internet (enduring materials)	304	3,390	233	755	3,021	637	7,980	2,249	18,569
Enduring materials (other)	108	859	97	163	1,150	74	3,272	587	6,310
Learning from teaching	0	512	0	2	11	28	88	4	645
Journal CME	83	565	5	20	2,464	27	313	60	3,537
Manuscript review	0	8	0	0	62	1	0	0	71
Total	3,362	44,982	2,568	3,031	12,405	2,541	16,916	17,100	102,905
Jointly sponsored									
Courses	476	2,511	71	885	7,374	1,604	909	3,035	16,865
Regularly scheduled series	121	849	0	104	133	23	28	728	1,986
Internet (live)	14	9	3	56	51	88	101	80	402
Test-item writing	0	0	0	0	45	0	0	2	47
Committee learning	0	7	19	0	1	0	0	0	27
Performance improvement	0	3	0	1	13	6	4	33	60
Internet searching and learning	0	1	1	0	0	0	0	10	12
Internet (enduring materials)	59	405	9	186	442	542	838	6,574	9,055
Enduring materials (other)	11	24	0	20	123	107	218	284	787
Learning from teaching	0	17	0	0	2	1	0	0	20
Journal CME	0	28	0	1	118	31	403	18	599
Manuscript review	0	1	0	0	2	0	0	0	3
Total	681	3,855	103	1,253	8,304	2,402	2,501	10,764	29,863
Grand total	4,043	48,837	2,671	4,284	20,709	4,943	19,417	27,864	132,768

Note: Totals may be off due to rounding.



Combined Data: CME Enterprise Presented by ACCME-Accredited and State-Accredited Providers

Table 1.3. Hours of Instruction by Organization and Activity Type - 2011

Organization type	Government or military	Hospital / health care delivery system	Insurance company / managed-care company	Nonprofit (other)	Nonprofit (physician membership organization)	Not classified	Publishing / education company	School of medicine	Grand total
# of Providers	41	1,210	28	106	362	76	132	124	2,079
Directly sponsored									
Courses	22,962	88,184	3,541	12,190	57,983	9,729	23,169	70,035	287,793
Regularly scheduled series	1,284	211,633	911	4,433	1,015	3,639	854	193,045	416,814
Internet (live)	287	864	64	338	1,821	140	1,029	399	4,942
Test-item writing	0	30	0	0	466	0	0	0	496
Committee learning	78	855	505	10	140	4	5	0	1,596
Performance improvement	0	2,516	35	76	1,260	147	865	1,095	5,994
Internet searching and learning	8	562	0	1	4	3	1,005	52	1,633
Internet (enduring materials)	468	4,887	1,279	1,625	13,574	2,448	10,497	4,385	39,163
Enduring materials (other)	226	2,422	186	240	11,622	95	14,386	4,294	33,471
Learning from teaching	0	1,340	0	8	276	319	149	44	2,135
Journal CME	123	913	5	42	4,036	40	722	141	6,022
Manuscript review	0	8	0	0	221	2	0	0	231
Total	25,435	314,214	6,526	18,962	92,417	16,565	52,681	273,489	800,289
Jointly sponsored									
Courses	8,804	16,621	301	5,469	29,427	3,919	7,887	24,660	97,088
Regularly scheduled series	4,097	11,331	0	1,390	2,067	406	67	14,869	34,226
Internet (live)	24	13	3	113	137	132	168	613	1,202
Test-item writing	0	0	0	0	481	0	0	20	501
Committee learning	0	14	112	0	9	0	0	0	135
Performance improvement	0	31	0	20	232	120	80	660	1,143
Internet searching and learning	0	10	2,057	0	0	0	0	180	2,247
Internet (enduring materials)	187	739	14	315	1,634	602	989	4,186	8,666
Enduring materials (other)	19	165	0	27	1,022	198	1,419	3,228	6,078
Learning from teaching	0	248	0	0	54	5	0	0	307
Journal CME	0	97	0	2	236	34	424	57	849
Manuscript review	0	3	0	0	4	0	0	0	7
Total	13,130	29,272	2,486	7,336	35,302	5,416	11,033	48,472	152,447
Grand total	38,565	343,486	9,012	26,298	127,719	21,981	63,714	321,961	952,736

Note: Totals may be off due to rounding.



Combined Data: CME Enterprise Presented by ACCME-Accredited and State-Accredited Providers

Table 1.4. Physician Participants by Organization and Activity Type - 2011

Organization type	Government or military	Hospital / health care delivery system	Insurance company / managed- care company	Nonprofit (other)	Nonprofit (physician membership organization)	Not classified	Publishing / education company	School of medicine	Grand total
# of Providers	41	1,210	28	106	362	76	132	124	2,079
Directly sponsored									
Courses	20,285	548,532	35,719	46,180	625,027	18,142	136,312	242,817	1,673,014
Regularly scheduled series	19,471	2,194,391	205	56,958	8,258	29,162	5,140	2,090,214	4,403,799
Internet (live)	4,417	12,996	6,402	3,689	10,687	467	5,101	4,499	48,258
Test-item writing	0	37	0	0	718	0	0	0	755
Committee learning	195	6,224	1,992	91	78	6	5	0	8,591
Performance improvement	0	3,995	195	285	11,019	42	12,648	1,124	29,308
Internet searching and learning	13	7,155	0	1	2,113	1	76,034	552	85,869
Internet (enduring materials)	9,547	150,218	34,719	165,253	357,280	54,371	2,638,619	158,200	3,568,207
Enduring materials (other)	2,668	22,511	41,367	388	230,999	411	812,492	20,847	1,131,683
Learning from teaching	0	1,986	0	0	1,469	125	52	205	3,837
Journal CME	2,905	105,277	178	260	682,359	1,453	89,890	1,650	883,972
Manuscript review	0	6	0	0	35,692	0	0	0	35,698
Total	59,501	3,053,328	120,777	273,105	1,965,699	104,180	3,776,293	2,520,108	11,872,991
Jointly sponsored									
Courses	4,886	64,254	2,261	22,897	151,458	24,615	35,090	119,825	425,286
Regularly scheduled series	27,455	92,041	0	10,813	15,158	2,232	240	150,420	298,359
Internet (live)	175	268	43	200	3,561	1,942	9,377	829	16,395
Test-item writing	0	0	0	0	392	0	0	264	656
Committee learning	0	115	349	0	40	0	0	0	504
Performance improvement	0	32	0	0	5,883	17	756	8,279	14,967
Internet searching and learning	0	2	4,114	0	0	0	0	2,129	6,245
Internet (enduring materials)	532	18,518	101	13,122	61,510	33,453	87,856	592,096	807,188
Enduring materials (other)	26	1,979	0	2,338	5,464	3,242	17,178	37,657	67,884
Learning from teaching	0	248	0	0	19	18	0	0	285
Journal CME	0	652	0	110	3,163	404	225,544	301	230,174
Manuscript review	0	214	0	0	473	0	0	0	687
Total	33,074	178,323	6,868	49,480	247,121	65,923	376,041	911,800	1,868,630
Grand total	92,575	3,231,651	127,645	322,585	2,212,820	170,103	4,152,334	3,431,908	13,741,621

Note: Totals may be off due to rounding.



Combined Data: CME Enterprise Presented by ACCME-Accredited and State-Accredited Providers

Table 1.5. Nonphysician Participants by Organization and Activity Type - 2011

Organization type	Government or military	Hospital / health care delivery system	Insurance company / managed- care company	Nonprofit (other)	Nonprofit (physician membership organization)	Not classified	Publishing / education company	School of medicine	Grand total
# of Providers	41	1,210	28	106	362	76	132	124	2,079
Directly sponsored									
Courses	69,574	412,030	6,787	109,475	341,897	38,354	98,803	189,695	1,266,615
Regularly scheduled series	19,810	1,250,400	12	31,243	11,975	3,853	2,916	772,443	2,092,652
Internet (live)	12,025	7,351	972	75,160	16,140	10,350	16,521	10,490	149,009
Test-item writing	0	2	0	0	1	0	0	0	3
Committee learning	208	2,914	106	51	0	0	0	0	3,279
Performance improvement	0	1,374	0	123	1,866	45	3,066	496	6,970
Internet searching and learning	1	907	0	0	0	2	3,329	64	4,303
Internet (enduring materials)	67,199	88,345	3,899	313,071	433,728	46,969	3,003,408	133,649	4,090,268
Enduring materials (other)	41,437	44,016	519	1,149	57,906	503	297,992	26,423	469,945
Learning from teaching	0	1,103	0	2	1,240	23	7	2	2,377
Journal CME	9,262	17,077	64	389	65,979	853	134,515	1,497	229,636
Manuscript review	0	2	0	0	702	0	0	0	704
Total	219,516	1,825,521	12,359	530,663	931,434	100,952	3,560,557	1,134,759	8,315,761
Jointly sponsored									
Courses	14,566	70,007	1,436	24,830	100,504	19,993	20,940	99,456	351,732
Regularly scheduled series	10,890	66,062	0	4,506	9,244	1,049	210	94,687	186,648
Internet (live)	1,245	82	56	1,673	3,492	4,658	3,845	2,347	17,398
Test-item writing	0	0	0	0	152	0	0	0	152
Committee learning	0	6	21	0	0	0	0	0	27
Performance improvement	0	0	0	0	407	3	3	109	522
Internet searching and learning	0	0	0	0	0	0	0	405	405
Internet (enduring materials)	4,925	21,406	30	16,234	16,796	25,000	176,995	295,633	557,019
Enduring materials (other)	107	167	0	404	224	687	2,394	15,815	19,798
Learning from teaching	0	34	0	0	303	10	0	0	347
Journal CME	0	222	0	0	153	122	107,100	736	108,333
Manuscript review	0	646	0	0	1	0	0	0	647
Total	31,733	158,632	1,543	47,647	131,276	51,522	311,487	509,188	1,243,028
Grand total	251,249	1,984,153	13,902	578,310	1,062,710	152,474	3,872,044	1,643,947	9,558,789

Note: Totals may be off due to rounding.



Combined Data: CME Enterprise Presented by ACCME-Accredited and State-Accredited Providers

Table 1.6. Income and Expense - 2011
Total providers =2079

	Total income	Total commercial support with monetary value of in-kind commercial support excluded ¹	Advertising and exhibits income	Other income ²	Total expense
Average	\$ 1,130,149	\$ 361,908	\$ 148,589	\$ 619,652	\$ 892,353
Median ³	\$ 80,750	\$ -	\$ -	\$ 55,655	\$ 87,055
Total	\$ 2,349,580,281	\$ 752,406,638	\$ 308,916,131	\$ 1,288,257,513	\$ 1,855,201,131
Providers reporting data >0	1,958	1,022	923	1,865	2,026

¹ Through 2010, ACCME-accredited and state-accredited providers reported the monetary value of in-kind commercial support they received, and included that amount in their total commercial support numbers. Beginning in 2011, due to a modification in ACCME commercial support reporting requirements, accredited providers no longer included the monetary value of in-kind support and reported only the dollar values for funds actually received. The nature (required) and source (optional) of in-kind commercial support is now reported qualitatively. Examples of in-kind commercial support include equipment, supplies, facilities, and other nonmonetary resources provided by a commercial interest in support of the CME activity.

² Other income represents income other than commercial support and advertising and exhibits income; examples include participant registration fees, and allocations from a provider's parent organization or other internal departments.

³ More than half of ACCME-accredited and state-accredited providers reported no commercial support or advertising and exhibit income; therefore the median for these categories is zero.



Combined Data: CME Presented by ACCME-Accredited and State-Accredited Providers
Table 1.7. Income and Expense by Organization Type - 2011

Organization type	# of Providers	Total income	Total commercial support with monetary value of in-kind commercial support included (2010 and earlier) ¹	Total commercial support with monetary value of in-kind commercial support excluded (2011) ¹	Advertising and exhibits income	Other income ²	Total expense
Government or military	41	\$ 69,949,470	Not reported	\$ 37,150	\$ 205,341	\$ 69,706,979	\$ 70,198,680
Hospital/health care delivery system	1,210	\$ 204,561,685	Not reported	\$ 52,568,251	\$ 20,887,490	\$ 131,105,944	\$ 210,319,613
Insurance company/managed-care company	28	\$ 9,229,228	Not reported	\$ 348,502	\$ 71,850	\$ 8,808,876	\$ 11,070,537
Non-profit (other)	106	\$ 151,718,739	Not reported	\$ 60,471,672	\$ 13,569,121	\$ 77,677,947	\$ 131,897,837
Nonprofit (physician membership organization)	362	\$ 867,428,819	Not reported	\$ 124,913,669	\$ 227,212,757	\$ 515,302,393	\$ 586,732,164
Not classified	76	\$ 92,032,989	Not reported	\$ 64,363,362	\$ 3,384,527	\$ 24,285,100	\$ 83,402,890
Publishing/education company	132	\$ 537,600,949	Not reported	\$ 248,015,575	\$ 17,125,791	\$ 272,459,583	\$ 395,387,855
School of medicine	124	\$ 417,058,401	Not reported	\$ 201,688,456	\$ 26,459,253	\$ 188,910,692	\$ 366,191,556
Grand total 2011	2,079	\$ 2,349,580,281	\$ -	\$ 752,406,638	\$ 308,916,131	\$ 1,288,257,513	\$ 1,855,201,131
Grand total 2010	2,144	\$ 2,374,984,949	\$ 846,182,668	Not reported	\$ 288,774,381	\$ 1,240,027,901	\$ 1,886,898,311
Grand total 2009	2,225	\$ 2,324,715,332	\$ 876,865,305	Not reported	\$ 294,061,256	\$ 1,153,788,771	\$ 1,877,113,289
Grand total 2008	2,329	\$ 2,521,740,489	\$ 1,069,602,974	Not reported	\$ 288,909,091	\$ 1,163,228,424	\$ 2,022,203,630
Grand total 2007	2,399	\$ 2,685,122,297	\$ 1,248,924,872	Not reported	\$ 284,231,075	\$ 1,151,966,348	\$ 2,088,890,698
Grand total 2006	2,413	\$ 2,519,080,714	\$ 1,238,820,965	Not reported	\$ 255,114,152	\$ 1,025,145,599	\$ 1,957,163,277
Grand total 2005	2,322	\$ 2,355,651,965	\$ 1,153,185,751	Not reported	\$ 243,078,130	\$ 959,388,083	\$ 1,837,648,348

¹ Through 2010, ACCME-accredited and state-accredited providers reported the monetary value of in-kind commercial support they received, and included that amount in their total commercial support numbers. Beginning in 2011, due to a modification in ACCME commercial support reporting requirements, accredited providers no longer included the monetary value of in-kind support and reported only the dollar values for funds actually received. The nature (required) and source (optional) of in-kind commercial support is now reported qualitatively. Examples of in-kind commercial support include equipment, supplies, facilities, and other nonmonetary resources provided by a commercial interest in support of the CME activity.

² Other income represents income other than commercial support and advertising and exhibits income; examples include participant registration fees, and allocations from a provider's parent organization or other internal departments.



CME Presented by State-Accredited Providers Only

Table 2.1. Size of the CME Enterprise - 2011

n=1392¹

	Activities	Hours of instruction	Physician participants	Nonphysician participants
Directly sponsored				
Courses	23,332	79,076	515,553	387,458
Regularly scheduled series	11,773	164,934	1,581,383	917,268
Internet (live)	290	852	21,515	52,788
Test-item writing	30	30	37	2
Committee learning	366	785	5,867	2,810
Performance improvement	247	2,345	2,855	1,229
Internet searching and learning	446	530	1,100	164
Internet (enduring materials)	2,135	5,699	68,573	50,352
Enduring materials (other)	747	1,394	14,390	40,876
Learning from teaching	544	1,395	2,036	1,262
Journal CME	373	705	5,245	2,270
Manuscript review	8	8	6	2
Total	40,291	257,752	2,218,560	1,456,481
Jointly sponsored				
Courses	2,947	15,318	73,186	79,026
Regularly scheduled series	858	11,409	81,464	59,737
Internet (live)	20	81	392	1,767
Test-item writing	0	0	0	0
Committee learning	7	14	115	6
Performance Improvement	3	22	161	2
Internet searching and learning	0	0	0	0
Internet (enduring materials)	400	722	15,338	22,660
Enduring materials (other)	19	143	468	50
Learning from teaching	18	91	56	337
Journal CME	27	104	756	226
Manuscript review	0	0	0	0
Total	4,299	27,903	171,936	163,811
Grand total 2011				
	1,392	44,590	285,655	2,390,496
Grand total 2010	1,450	46,337	293,514	2,380,631
Grand total 2009	1,518	48,212	299,845	2,483,827
Grand total 2008	1,601	49,435	322,238	2,551,540
Grand total 2007²	1,663	49,866	344,306	2,679,753
Grand total 2006³	1,684	56,302	349,696	3,136,610
Grand total 2005	1,606	54,901	358,402	2,704,253

Note: Totals may be off due to rounding.

¹ The number of state-accredited providers has declined in recent years, due to a variety of factors. In some cases, providers that withdrew their accreditation status continue to offer CME through partnerships (joint sponsorships) with accredited providers.

² The grand total number of activities decreased significantly from 2006 to 2007 due to clarification of ACCME's definitions related to regularly scheduled series. Prior to 2007 providers reported each session within the series as an activity; since then they reported each series as an activity.

³ Beginning in 2006, recognized state medical societies began reviewing the data submitted by their accredited providers to confirm its accuracy and its conformance to ACCME's stated definitions. As a result, the validity and reliability of the data has increased since that time.



CME Presented by State-Accredited Providers Only

Table 2.2. Activities by Organization and Activity Type - 2011

Organization type # of Providers	Government or military	Hospital / health care delivery system	Insurance company / managed- care company	Nonprofit (other)	Nonprofit (physician membership organization)	Not classified	Publishing / education company	School of medicine ¹	Grand total
Directly sponsored	26	1,127	14	73	108	39	5	0	1,392
Courses	592	20,420	132	911	446	716	115	0	23,332
Regularly scheduled series	54	11,242	99	218	59	88	13	0	11,773
Internet (live)	14	199	6	63	2	6	0	0	290
Test-item writing	0	30	0	0	0	0	0	0	30
Committee learning	2	359	0	3	0	2	0	0	366
Performance improvement	0	219	4	4	4	13	3	0	247
Internet searching and learning	1	440	0	0	0	5	0	0	446
Internet (enduring materials)	68	1,797	73	123	15	59	0	0	2,135
Enduring materials (other)	1	693	36	5	2	9	1	0	747
Learning from teaching	0	511	0	2	4	27	0	0	544
Journal CME	15	307	1	15	8	27	0	0	373
Manuscript review	0	8	0	0	0	0	0	0	8
Total	747	36,225	351	1,344	540	952	132	0	40,291
Jointly sponsored									
Courses	66	1,781	30	311	494	264	1	0	2,947
Regularly scheduled series	0	676	0	108	71	3	0	0	858
Internet (live)	2	5	0	13	0	0	0	0	20
Test-item writing	0	0	0	0	0	0	0	0	0
Committee learning	0	7	0	0	0	0	0	0	7
Performance improvement	0	1	0	0	2	0	0	0	3
Internet searching and learning	0	0	0	0	0	0	0	0	0
Internet (enduring materials)	2	356	7	30	3	2	0	0	400
Enduring materials (other)	0	10	0	1	0	8	0	0	19
Learning from teaching	0	16	0	0	2	0	0	0	18
Journal CME	0	24	0	1	2	0	0	0	27
Manuscript review	0	0	0	0	0	0	0	0	0
Total	70	2,876	37	464	574	277	1	0	4,299
Grand total	817	39,101	388	1,808	1,114	1,229	133	0	44,590

Note: Totals may be off due to rounding.

¹Schools of medicine are eligible to be accredited only by the ACCME and may not seek accreditation by a state medical society.



CME Presented by State-Accredited Providers Only

Table 2.3. Hours of Instruction by Organization and Activity Type - 2011

Organization type	Government or military	Hospital / health care delivery system	Insurance company / managed-care company	Nonprofit (other)	Nonprofit (physician membership organization)	Not classified	Publishing / education company	School of medicine ¹	Grand total
# of Providers	26	1,127	14	73	108	39	5	0	1,392
Directly sponsored									
Courses	2,425	64,286	384	4,959	2,055	3,191	1,778	0	79,076
Regularly scheduled series	584	157,441	911	3,607	772	1,323	297	0	164,934
Internet (live)	17	721	27	69	7	12	0	0	852
Test-item writing	0	30	0	0	0	0	0	0	30
Committee learning	6	765	0	10	0	4	0	0	785
Performance improvement	0	2,065	20	51	33	146	30	0	2,345
Internet searching and learning	7	521	0	0	0	3	0	0	530
Internet (enduring materials)	82	3,083	557	1,027	63	888	0	0	5,699
Enduring materials (other)	3	1,263	61	34	7	24	1	0	1,394
Learning from teaching	0	1,338	0	8	20	29	0	0	1,395
Journal CME	36	589	1	23	16	40	0	0	705
Manuscript review	0	8	0	0	0	0	0	0	8
Total	3,159	232,109	1,961	9,787	2,973	5,658	2,106	0	257,752
Jointly sponsored									
Courses	431	10,528	129	1,868	1,760	599	4	0	15,318
Regularly scheduled series	0	9,652	0	713	969	75	0	0	11,409
Internet (live)	2	7	0	72	0	0	0	0	81
Test-item writing	0	0	0	0	0	0	0	0	0
Committee learning	0	14	0	0	0	0	0	0	14
Performance improvement	0	10	0	0	12	0	0	0	22
Internet searching and learning	0	0	0	0	0	0	0	0	0
Internet (enduring materials)	13	646	8	51	3	2	0	0	722
Enduring materials (other)	0	61	0	4	0	78	0	0	143
Learning from teaching	0	37	0	0	54	0	0	0	91
Journal CME	0	62	0	2	40	0	0	0	104
Manuscript review	0	0	0	0	0	0	0	0	0
Total	446	21,017	136	2,708	2,838	754	4	0	27,903
Grand total	3,605	253,126	2,097	12,495	5,811	6,412	2,110	0	285,655

Note: Totals may be off due to rounding.

¹Schools of medicine are eligible to be accredited only by the ACCME and may not seek accreditation by a state medical society.



CME Presented by State-Accredited Providers Only

Table 2.4. Physician Participants by Organization and Activity Type - 2011

Organization type	Government or military	Hospital / health care delivery system	Insurance company / managed- care company	Nonprofit (other)	Nonprofit (physician membership organization)	Not classified	Publishing / education company	School of medicine ¹	Grand total
# of Providers	26	1,127	14	73	108	39	5	0	1,392
Directly sponsored									
Courses	3,532	454,057	8,161	17,160	24,571	7,554	518	0	515,553
Regularly scheduled series	6,597	1,513,164	205	46,205	5,260	7,552	2,400	0	1,581,383
Internet (live)	2,443	12,467	5,969	571	42	23	0	0	21,515
Test-item writing	0	37	0	0	0	0	0	0	37
Committee learning	150	5,620	0	91	0	6	0	0	5,867
Performance improvement	0	2,158	155	229	238	36	39	0	2,855
Internet searching and learning	10	1,089	0	0	0	1	0	0	1,100
Internet (enduring materials)	4,549	44,093	11,938	1,568	311	6,114	0	0	68,573
Enduring materials (other)	1	10,604	3,301	66	3	261	154	0	14,390
Learning from teaching	0	1,925	0	0	84	27	0	0	2,036
Journal CME	198	3,393	2	199	0	1,453	0	0	5,245
Manuscript review	0	6	0	0	0	0	0	0	6
Total	17,480	2,048,613	29,731	66,089	30,509	23,027	3,111	0	2,218,560
Jointly sponsored									
Courses	746	44,297	816	8,032	14,341	4,926	28	0	73,186
Regularly scheduled series	0	70,277	0	4,557	6,073	557	0	0	81,464
Internet (live)	119	238	0	35	0	0	0	0	392
Test-item writing	0	0	0	0	0	0	0	0	0
Committee learning	0	115	0	0	0	0	0	0	115
Performance improvement	0	5	0	0	156	0	0	0	161
Internet searching and learning	0	0	0	0	0	0	0	0	0
Internet (enduring materials)	14	14,923	72	221	100	8	0	0	15,338
Enduring materials (other)	0	102	0	0	0	366	0	0	468
Learning from teaching	0	37	0	0	19	0	0	0	56
Journal CME	0	616	0	110	30	0	0	0	756
Manuscript review	0	0	0	0	0	0	0	0	0
Total	879	130,610	888	12,955	20,719	5,857	28	0	171,936
Grand total	18,359	2,179,223	30,619	79,044	51,228	28,884	3,139	0	2,390,496

Note: Totals may be off due to rounding.

¹Schools of medicine are eligible to be accredited only by the ACCME and may not seek accreditation by a state medical society.



CME Presented by State-Accredited Providers Only

Table 2.5. Nonphysician Participants by Organization and Activity Type - 2011

Organization type # of Providers	Government or military	Hospital / health care delivery system	Insurance company / managed- care company	Nonprofit (other)	Nonprofit (physician membership organization)	Not classified	Publishing / education company	School of medicine ¹	Grand total
Directly sponsored	26	1,127	14	73	108	39	5	0	1,392
Courses	12,917	313,331	1,822	32,072	7,402	16,825	3,089	0	387,458
Regularly scheduled series	3,758	877,252	12	26,511	6,049	1,829	1,857	0	917,268
Internet (live)	1,034	3,624	1	47,512	523	94	0	0	52,788
Test-item writing	0	2	0	0	0	0	0	0	2
Committee learning	208	2,551	0	51	0	0	0	0	2,810
Performance improvement	0	1,039	0	123	4	45	18	0	1,229
Internet searching and learning	1	161	0	0	0	2	0	0	164
Internet (enduring materials)	20,828	22,595	685	4,533	88	1,623	0	0	50,352
Enduring materials (other)	3	40,629	103	19	8	74	40	0	40,876
Learning from teaching	0	1,103	0	2	134	23	0	0	1,262
Journal CME	40	1,260	0	117	0	853	0	0	2,270
Manuscript review	0	2	0	0	0	0	0	0	2
Total	38,789	1,263,549	2,623	110,940	14,208	21,368	5,004	0	1,456,481
Jointly sponsored									
Courses	4,503	53,029	422	10,238	6,898	3,878	58	0	79,026
Regularly scheduled series	0	52,611	0	3,885	2,776	465	0	0	59,737
Internet (live)	830	0	0	937	0	0	0	0	1,767
Test-item writing	0	0	0	0	0	0	0	0	0
Committee learning	0	6	0	0	0	0	0	0	6
Performance improvement	0	0	0	0	2	0	0	0	2
Internet searching and learning	0	0	0	0	0	0	0	0	0
Internet (enduring materials)	116	15,673	30	6,814	26	1	0	0	22,660
Enduring materials (other)	0	49	0	1	0	0	0	0	50
Learning from teaching	0	34	0	0	303	0	0	0	337
Journal CME	0	222	0	0	4	0	0	0	226
Manuscript review	0	0	0	0	0	0	0	0	0
Total	5,449	121,624	452	21,875	10,009	4,344	58	0	163,811
Grand total	44,238	1,385,173	3,075	132,815	24,217	25,712	5,062	0	1,620,292

Note: Totals may be off due to rounding.

¹Schools of medicine are eligible to be accredited only by the ACCME and may not seek accreditation by a state medical society.



CME Presented by State-Accredited Providers Only

Table 2.6. Income and Expense - 2011
Total providers =1392

	Total income	Total commercial support with monetary value of in-kind commercial support excluded¹	Advertising and exhibits income	Other income²	Total expense
Average	\$ 94,783	\$ 11,481	\$ 9,027	\$ 74,276	\$ 96,327
Median ³	\$ 39,620	\$ -	\$ -	\$ 29,429	\$ 43,109
Total	\$ 131,938,459	\$ 15,980,924	\$ 12,565,491	\$ 103,392,044	\$ 134,087,088
Providers reporting data >0	1,289	507	450	1,242	1,345

¹ Through 2010, ACCME-accredited and state-accredited providers reported the monetary value of in-kind commercial support they received, and included that amount in their total commercial support numbers. Beginning in 2011, due to a modification in ACCME commercial support reporting requirements, accredited providers no longer included the monetary value of in-kind support and reported only the dollar values for funds actually received. The nature (required) and source (optional) of in-kind commercial support is now reported qualitatively. Examples of in-kind commercial support include equipment, supplies, facilities, and other nonmonetary resources provided by a commercial interest in support of the CME activity.

² Other income represents income other than commercial support and advertising and exhibits income; examples include participant registration fees, and allocations from a provider's parent organization or other internal departments.

³ More than half of state-accredited providers reported that they received no commercial support or advertising and exhibit income; therefore the median for these categories is zero.



CME Presented by State-Accredited Providers Only
Table 2.7. Income and Expense by Organization Type - 2011

Organization type	# of Providers	Total income	Total commercial support with monetary value of in-kind commercial support included (2010 and earlier) ¹	Total commercial support with monetary value of in-kind commercial support excluded (2011) ¹	Advertising and exhibits income	Other income ²	Total expense
Government or military	26	\$ 1,395,513	Not reported	\$ 10,500	\$ 1,800	\$ 1,383,213	\$ 1,426,294
Hospital/health care delivery system	1,127	\$ 96,106,922	Not reported	\$ 10,127,162	\$ 7,837,546	\$ 78,142,214	\$ 101,796,215
Insurance company/managed-care company	14	\$ 5,101,071	Not reported	\$ -	\$ 18,250	\$ 5,082,821	\$ 5,149,627
Non-profit (other)	73	\$ 11,465,833	Not reported	\$ 1,045,721	\$ 1,001,467	\$ 9,418,645	\$ 10,473,312
Nonprofit (physician membership organization)	108	\$ 12,197,356	Not reported	\$ 3,046,778	\$ 3,275,280	\$ 5,875,298	\$ 10,203,985
Not classified	39	\$ 4,860,070	Not reported	\$ 1,743,763	\$ 396,348	\$ 2,719,959	\$ 4,726,805
Publishing/education company	5	\$ 811,694	Not reported	\$ 7,000	\$ 34,800	\$ 769,894	\$ 310,850
School of medicine ³	0	\$ -	Not reported	\$ -	\$ -	\$ -	\$ -
Grand total 2011	1,392	\$ 131,938,459	\$ -	\$ 15,980,924	\$ 12,565,491	\$ 103,392,044	\$ 134,087,088
Grand total 2010	1,450	\$ 117,323,948	\$ 15,332,751	Not reported	\$ 12,123,590	\$ 105,200,358	\$ 132,159,587
Grand total 2009	1,518	\$ 119,595,115	\$ 20,766,501	Not reported	\$ 11,360,562	\$ 108,234,553	\$ 136,700,374
Grand total 2008	1,601	\$ 124,682,202	\$ 29,884,624	Not reported	\$ 11,532,497	\$ 113,149,705	\$ 150,423,958
Grand total 2007	1,663	\$ 108,343,973	\$ 37,579,668	Not reported	\$ 10,197,519	\$ 98,146,454	\$ 145,604,957
Grand total 2006	1,684	\$ 95,083,838	\$ 39,415,446	Not reported	\$ 10,200,468	\$ 84,883,370	\$ 136,454,743
Grand total 2005	1,606	\$ 67,594,616	\$ 37,588,680	Not reported	\$ 7,356,906	\$ 60,237,710	\$ 120,181,807

¹ Through 2010, ACCME-accredited and state-accredited providers reported the monetary value of in-kind commercial support they received, and included that amount in their total commercial support numbers. Beginning in 2011, due to a modification in ACCME commercial support reporting requirements, accredited providers no longer included the monetary value of in-kind support and reported only the dollar values for funds actually received. The nature (required) and source (optional) of in-kind commercial support is now reported qualitatively. Examples of in-kind commercial support include equipment, supplies, facilities, and other nonmonetary resources provided by a commercial interest in support of the CME activity.

² Other income represents income other than commercial support and advertising and exhibits income; examples include participant registration fees, and allocations from a provider's parent organization or other internal departments.

³ Schools of medicine are eligible to be accredited only by the ACCME and may not seek accreditation by a state medical society.



CME Presented by ACCME-Accredited Providers Only
Table 3.1. Size of the CME Enterprise - 2011
n=687

	Activities	Hours of instruction	Physician participants	Nonphysician participants
Directly sponsored				
Courses	26,312	208,717	1,157,461	879,157
Regularly scheduled series	9,007	251,880	2,822,416	1,175,384
Internet (live)	1,386	4,090	26,743	96,221
Test-item writing	55	466	718	1
Committee learning	205	811	2,724	469
Performance improvement	195	3,649	26,453	5,741
Internet searching and learning	129	1,103	84,769	4,139
Internet (enduring materials)	16,434	33,464	3,499,634	4,039,916
Enduring materials (other)	5,563	32,077	1,117,293	429,069
Learning from teaching	101	741	1,801	1,115
Journal CME	3,164	5,317	878,727	227,366
Manuscript review	63	223	35,692	702
Total	62,614	542,537	9,654,431	6,859,280
Jointly sponsored				
Courses	13,918	81,769	352,100	272,706
Regularly scheduled series	1,128	22,818	216,895	126,911
Internet (live)	382	1,121	16,003	15,631
Test-item writing	47	501	656	152
Committee learning	20	121	389	21
Performance Improvement	57	1,121	14,806	520
Internet searching and learning	12	2,247	6,245	405
Internet (enduring materials)	8,655	7,944	791,850	534,359
Enduring materials (other)	768	5,935	67,416	19,748
Learning from teaching	2	216	229	10
Journal CME	572	745	229,418	108,107
Manuscript review	3	7	687	647
Total	25,564	124,544	1,696,694	1,079,217

	# of Providers				
Grand total 2011	687	88,178	667,081	11,351,125	7,938,497
Grand total 2010¹	694	81,543	660,690	11,433,737	7,855,897
Grand total 2009	707	95,062	689,768	10,780,093	6,782,681
Grand total 2008	728	100,935	769,613	10,678,562	6,571,594
Grand total 2007	736	113,003	741,261	8,698,299	5,177,299
Grand total 2006	729	93,582	712,163	8,255,017	4,577,078
Grand total 2005	716	79,820	678,528	7,650,207	3,683,749
Grand total 2004	716	71,564	692,673	6,516,564	3,235,562
Grand total 2003	697	66,788	704,077	6,037,395	3,041,998
Grand total 2002	686	55,967	624,824	5,415,945	2,692,971
Grand total 2001	674	51,048	583,449	5,178,883	2,159,312
Grand total 2000	680	49,451	551,739	5,093,595	1,883,811
Grand total 1999	655	47,129	585,446	4,436,197	1,760,504
Grand total 1998	632	48,092	574,069	3,662,701	1,544,664

Note: Totals may be off due to rounding

¹ The transition to collecting activity data in PARS for ACCME-accredited providers in 2010 caused a significant change in providers' interpretation of reporting requirements for various activity formats.



CME Presented by ACCME-Accredited Providers Only

Table 3.2. Activities by Organization and Activity Type - 2011

Organization type # of Providers	Government or military	Hospital / health care delivery system	Insurance company / managed- care company	Nonprofit (other)	Nonprofit (physician membership organization)	Not classified	Publishing / education company	School of medicine	Grand total
Directly sponsored	15	83	14	33	254	37	127	124	687
Courses	1,919	3,994	1,783	667	4,723	761	4,696	7,769	26,312
Regularly scheduled series	99	2,542	0	44	12	83	19	6,208	9,007
Internet (live)	179	113	36	178	322	99	340	119	1,386
Test-item writing	0	0	0	0	55	0	0	0	55
Committee learning	6	19	172	0	7	0	1	0	205
Performance improvement	0	31	1	2	63	1	43	54	195
Internet searching and learning	1	40	0	1	4	0	33	50	129
Internet (enduring materials)	236	1,593	160	632	3,006	578	7,980	2,249	16,434
Enduring materials (other)	107	166	61	158	1,148	65	3,271	587	5,563
Learning from teaching	0	1	0	0	7	1	88	4	101
Journal CME	68	258	4	5	2,456	0	313	60	3,164
Manuscript review	0	0	0	0	62	1	0	0	63
Total	2,615	8,757	2,217	1,687	11,865	1,589	16,784	17,100	62,614
Jointly sponsored									
Courses	410	716	41	588	6,880	1,340	908	3,035	13,918
Regularly scheduled series	121	128	0	41	62	20	28	728	1,128
Internet (live)	12	4	3	43	51	88	101	80	382
Test-item writing	0	0	0	0	45	0	0	2	47
Committee learning	0	0	19	0	1	0	0	0	20
Performance improvement	0	2	0	1	11	6	4	33	57
Internet searching and learning	0	1	1	0	0	0	0	10	12
Internet (enduring materials)	57	49	2	156	439	540	838	6,574	8,655
Enduring materials (other)	11	14	0	19	123	99	218	284	768
Learning from teaching	0	1	0	0	0	1	0	0	2
Journal CME	0	4	0	0	116	31	403	18	572
Manuscript review	0	1	0	0	2	0	0	0	3
Total	611	920	66	848	7,730	2,125	2,500	10,764	25,564
Grand total	3,226	9,677	2,283	2,535	19,595	3,714	19,284	27,864	88,178

Note: Totals may be off due to rounding.



CME Presented by ACCME-Accredited Providers Only

Table 3.3. Hours of Instruction by Organization and Activity Type - 2011

Organization type	Government or military	Hospital / health care delivery system	Insurance company / managed- care company	Nonprofit (other)	Nonprofit (physician membership organization)	Not classified	Publishing / education company	School of medicine	Grand total
# of Providers	15	83	14	33	254	37	127	124	687
Directly sponsored									
Courses	20,537	23,898	3,158	7,232	55,928	6,538	21,391	70,035	208,717
Regularly scheduled series	700	54,193	0	827	243	2,316	557	193,045	251,880
Internet (live)	270	143	37	270	1,814	129	1,029	399	4,090
Test-item writing	0	0	0	0	466	0	0	0	466
Committee learning	72	89	505	0	140	0	5	0	811
Performance improvement	0	451	15	25	1,227	1	835	1,095	3,649
Internet searching and learning	1	42	0	1	4	0	1,005	52	1,103
Internet (enduring materials)	386	1,804	722	598	13,511	1,560	10,497	4,385	33,464
Enduring materials (other)	223	1,159	125	206	11,615	71	14,385	4,294	32,077
Learning from teaching	0	2	0	0	256	290	149	44	741
Journal CME	87	324	4	19	4,020	0	722	141	5,317
Manuscript review	0	0	0	0	221	2	0	0	223
Total	22,276	82,105	4,565	9,176	89,445	10,907	50,575	273,489	542,537
Jointly sponsored									
Courses	8,374	6,093	172	3,601	27,667	3,320	7,883	24,660	81,769
Regularly scheduled series	4,097	1,679	0	678	1,098	332	67	14,869	22,818
Internet (live)	22	6	3	41	137	132	168	613	1,121
Test-item writing	0	0	0	0	481	0	0	20	501
Committee learning	0	0	112	0	9	0	0	0	121
Performance improvement	0	21	0	20	220	120	80	660	1,121
Internet searching and learning	0	10	2,057	0	0	0	0	180	2,247
Internet (enduring materials)	174	94	6	264	1,631	600	989	4,186	7,944
Enduring materials (other)	19	104	0	24	1,022	120	1,419	3,228	5,935
Learning from teaching	0	211	0	0	0	5	0	0	216
Journal CME	0	35	0	0	196	34	424	57	745
Manuscript review	0	3	0	0	4	0	0	0	7
Total	12,684	8,255	2,350	4,628	32,464	4,662	11,029	48,472	124,544
Grand total	34,960	90,360	6,915	13,803	121,908	15,569	61,605	321,961	667,081

Note: Totals may be off due to rounding.



CME Presented by ACCME-Accredited Providers Only

Table 3.4. Physician Participants by Organization and Activity Type - 2011

Organization type	Government or military	Hospital / health care delivery system	Insurance company / managed- care company	Nonprofit (other)	Nonprofit (physician membership organization)	Not classified	Publishing / education company	School of medicine	Grand total
# of Providers	15	83	14	33	254	37	127	124	687
Directly sponsored									
Courses	16,753	94,475	27,558	29,020	600,456	10,588	135,794	242,817	1,157,461
Regularly scheduled series	12,874	681,227	0	10,753	2,998	21,610	2,740	2,090,214	2,822,416
Internet (live)	1,974	529	433	3,118	10,645	444	5,101	4,499	26,743
Test-item writing	0	0	0	0	718	0	0	0	718
Committee learning	45	604	1,992	0	78	0	5	0	2,724
Performance improvement	0	1,837	40	56	10,781	6	12,609	1,124	26,453
Internet searching and learning	3	6,066	0	1	2,113	0	76,034	552	84,769
Internet (enduring materials)	4,998	106,125	22,781	163,685	356,969	48,257	2,638,619	158,200	3,499,634
Enduring materials (other)	2,667	11,907	38,066	322	230,996	150	812,338	20,847	1,117,293
Learning from teaching	0	61	0	0	1,385	98	52	205	1,801
Journal CME	2,707	101,884	176	61	682,359	0	89,890	1,650	878,727
Manuscript review	0	0	0	0	35,692	0	0	0	35,692
Total	42,021	1,004,715	91,046	207,016	1,935,190	81,153	3,773,182	2,520,108	9,654,431
Jointly sponsored									
Courses	4,140	19,957	1,445	14,865	137,117	19,689	35,062	119,825	352,100
Regularly scheduled series	27,455	21,764	0	6,256	9,085	1,675	240	150,420	216,895
Internet (live)	56	30	43	165	3,561	1,942	9,377	829	16,003
Test-item writing	0	0	0	0	392	0	0	264	656
Committee learning	0	0	349	0	40	0	0	0	389
Performance improvement	0	27	0	0	5,727	17	756	8,279	14,806
Internet searching and learning	0	2	4,114	0	0	0	0	2,129	6,245
Internet (enduring materials)	518	3,595	29	12,901	61,410	33,445	87,856	592,096	791,850
Enduring materials (other)	26	1,877	0	2,338	5,464	2,876	17,178	37,657	67,416
Learning from teaching	0	211	0	0	0	18	0	0	229
Journal CME	0	36	0	0	3,133	404	225,544	301	229,418
Manuscript review	0	214	0	0	473	0	0	0	687
Total	32,195	47,713	5,980	36,525	226,402	60,066	376,013	911,800	1,696,694
Grand total	74,216	1,052,428	97,026	243,541	2,161,592	141,219	4,149,195	3,431,908	11,351,125

Note: Totals may be off due to rounding.



CME Presented by ACCME-Accredited Providers Only

Table 3.5. Nonphysician Participants by Organization and Activity Type - 2011

Organization type # of Providers	Government or military	Hospital / health care delivery system	Insurance company / managed- care company	Nonprofit (other)	Nonprofit (physician membership organization)	Not classified	Publishing / education company	School of medicine	Grand total
Directly sponsored	15	83	14	33	254	37	127	124	687
Courses	56,657	98,699	4,965	77,403	334,495	21,529	95,714	189,695	879,157
Regularly scheduled series	16,052	373,148	0	4,732	5,926	2,024	1,059	772,443	1,175,384
Internet (live)	10,991	3,727	971	27,648	15,617	10,256	16,521	10,490	96,221
Test-item writing	0	0	0	0	1	0	0	0	1
Committee learning	0	363	106	0	0	0	0	0	469
Performance improvement	0	335	0	0	1,862	0	3,048	496	5,741
Internet searching and learning	0	746	0	0	0	0	3,329	64	4,139
Internet (enduring materials)	46,371	65,750	3,214	308,538	433,640	45,346	3,003,408	133,649	4,039,916
Enduring materials (other)	41,434	3,387	416	1,130	57,898	429	297,952	26,423	429,069
Learning from teaching	0	0	0	0	1,106	0	7	2	1,115
Journal CME	9,222	15,817	64	272	65,979	0	134,515	1,497	227,366
Manuscript review	0	0	0	0	702	0	0	0	702
Total	180,727	561,972	9,736	419,723	917,226	79,584	3,555,553	1,134,759	6,859,280
Jointly sponsored									
Courses	10,063	16,978	1,014	14,592	93,606	16,115	20,882	99,456	272,706
Regularly scheduled series	10,890	13,451	0	621	6,468	584	210	94,687	126,911
Internet (live)	415	82	56	736	3,492	4,658	3,845	2,347	15,631
Test-item writing	0	0	0	0	152	0	0	0	152
Committee learning	0	0	21	0	0	0	0	0	21
Performance improvement	0	0	0	0	405	3	3	109	520
Internet searching and learning	0	0	0	0	0	0	0	405	405
Internet (enduring materials)	4,809	5,733	0	9,420	16,770	24,999	176,995	295,633	534,359
Enduring materials (other)	107	118	0	403	224	687	2,394	15,815	19,748
Learning from teaching	0	0	0	0	0	10	0	0	10
Journal CME	0	0	0	0	149	122	107,100	736	108,107
Manuscript review	0	646	0	0	1	0	0	0	647
Total	26,284	37,008	1,091	25,772	121,267	47,178	311,429	509,188	1,079,217
Grand total	207,011	598,980	10,827	445,495	1,038,493	126,762	3,866,982	1,643,947	7,938,497

Note: Totals may be off due to rounding.



CME Presented by ACCME-Accredited Providers Only

Table 3.6. Income and Expense - 2011
Total providers =687

	Total income	Total commercial support with monetary value of in-kind commercial support excluded¹	Advertising and exhibits income	Other income²	Total expense
Average	\$ 3,228,008	\$ 1,071,944	\$ 431,369	\$ 1,724,695	\$ 2,505,261
Median	\$ 1,053,230	\$ 117,382	\$ 43,800	\$ 481,078	\$ 954,235
Total	\$ 2,217,641,822	\$ 736,425,714	\$ 296,350,640	\$ 1,184,865,469	\$ 1,721,114,043
Providers reporting data >0	669	515	473	623	681

¹ Through 2010, ACCME-accredited and state-accredited providers reported the monetary value of in-kind commercial support they received, and included that amount in their total commercial support numbers. Beginning in 2011, due to a modification in ACCME commercial support reporting requirements, accredited providers no longer included the monetary value of in-kind support and reported only the dollar values for funds actually received. The nature (required) and source (optional) of in-kind commercial support is now reported qualitatively. Examples of in-kind commercial support include equipment, supplies, facilities, and other nonmonetary resources provided by a commercial interest in support of the CME activity.

² Other income represents income other than commercial support and advertising and exhibit income; examples include participant registration fees and allocations from a provider's parent organization or other internal departments.



CME Presented by ACCME-Accredited Providers Only
Table 3.7. Income and Expense by Organization Type - 2011

Organization type	# of Providers	Total income	Total commercial support with monetary value of in-kind commercial support included (2010 and earlier) ¹	Total commercial support with monetary value of in-kind commercial support excluded (2011) ¹	Advertising and exhibits income	Other income ²	Total expense
Government or military	15	\$ 68,553,957	Not reported	\$ 26,650	\$ 203,541	\$ 68,323,766	\$ 68,772,386
Hospital/health care delivery system	83	\$ 108,454,763	Not reported	\$ 42,441,089	\$ 13,049,944	\$ 52,963,730	\$ 108,523,398
Insurance company/managed-care company	14	\$ 4,128,157	Not reported	\$ 348,502	\$ 53,600	\$ 3,726,055	\$ 5,920,910
Non-profit (other)	33	\$ 140,252,906	Not reported	\$ 59,425,951	\$ 12,567,654	\$ 68,259,302	\$ 121,424,525
Nonprofit (physician membership organization)	254	\$ 855,231,463	Not reported	\$ 121,866,891	\$ 223,937,477	\$ 509,427,095	\$ 576,528,179
Not classified	37	\$ 87,172,919	Not reported	\$ 62,619,599	\$ 2,988,179	\$ 21,565,141	\$ 78,676,085
Publishing/education company	127	\$ 536,789,255	Not reported	\$ 248,008,575	\$ 17,090,991	\$ 271,689,689	\$ 395,077,005
School of medicine	124	\$ 417,058,401	Not reported	\$ 201,688,456	\$ 26,459,253	\$ 188,910,692	\$ 366,191,556
Grand total 2011	687	\$ 2,217,641,822	-	\$ 736,425,714	\$ 296,350,640	\$ 1,184,865,469	\$ 1,721,114,043
Grand total 2010	694	\$ 2,242,328,250	\$ 830,849,917	Not reported	\$ 276,650,791	\$ 1,134,827,543	\$ 1,754,738,724
Grand total 2009	707	\$ 2,184,353,716	\$ 856,098,804	Not reported	\$ 282,700,694	\$ 1,045,554,218	\$ 1,740,412,915
Grand total 2008	728	\$ 2,367,173,663	\$ 1,039,718,350	Not reported	\$ 277,376,594	\$ 1,050,078,719	\$ 1,871,779,672
Grand total 2007	736	\$ 2,539,198,656	\$ 1,211,345,204	Not reported	\$ 274,033,556	\$ 1,053,819,894	\$ 1,943,285,741
Grand total 2006	729	\$ 2,384,581,430	\$ 1,199,405,519	Not reported	\$ 244,913,684	\$ 940,262,229	\$ 1,820,708,534
Grand total 2005	716	\$ 2,250,468,669	\$ 1,115,597,071	Not reported	\$ 235,721,224	\$ 899,150,373	\$ 1,717,466,541
Grand total 2004	716	\$ 2,052,577,784	\$ 1,071,064,979	Not reported	\$ 197,032,732	\$ 784,480,073	\$ 1,612,476,355
Grand total 2003	697	\$ 1,774,516,395	\$ 971,100,098	Not reported	\$ 183,293,597	\$ 620,122,700	\$ 1,539,686,438
Grand total 2002	686	\$ 1,596,198,865	\$ 746,015,426	Not reported	\$ 187,327,756	\$ 662,855,683	\$ 1,327,042,030
Grand total 2001	674	\$ 1,393,926,271	\$ 568,767,299	Not reported	\$ 159,955,455	\$ 665,203,517	\$ 1,179,631,684
Grand total 2000	680	\$ 1,271,189,580	\$ 466,971,749	Not reported	\$ 168,864,400	\$ 635,353,431	\$ 1,053,684,130
Grand total 1999	655	\$ 1,110,482,468	\$ 387,619,740	Not reported	\$ 148,241,160	\$ 574,621,568	\$ 920,897,968
Grand total 1998	632	\$ 888,544,752	\$ 301,949,112	Not reported	\$ 125,901,179	\$ 457,694,461	\$ 842,061,037

¹ Through 2010, ACCME-accredited and state-accredited providers reported the monetary value of in-kind commercial support they received, and included that amount in their total commercial support numbers. Beginning in 2011, due to a modification in ACCME commercial support reporting requirements, accredited providers no longer included the monetary value of in-kind support and reported only the dollar values for funds actually received. The nature (required) and source (optional) of in-kind commercial support is now reported qualitatively. Examples of in-kind commercial support include equipment, supplies, facilities, and other nonmonetary resources provided by a commercial interest in support of the CME activity.

² Other income represents income other than commercial support and advertising and exhibits income; for instance, participant registration fees, and allocations from a provider's parent organization or other internal departments.



CME Presented by ACCME-Accredited Providers Only
Table 3.8. ACCME-Accredited Providers by Organization Type from 1998-2011

Organization Type	1998	1999	2000	2001	2002	2003	2004	2005	2006	2007	2008	2009	2010	2011
Government or military	12	15	15	15	16	15	16	16	16	15	14	14	14	15
Hospital / health care delivery system	72	77	76	77	77	77	90	91	93	93	90	88	85	83
Insurance company / managed-care company	1	9	11	11	7	9	13	11	14	14	15	15	14	14
Nonprofit (other)	56	67	69	63	60	60	30	31	34	38	38	35	35	33
Nonprofit (physician membership organization)	221	222	228	227	230	232	273	270	267	270	270	265	258	254
Not classified	114	58	61	61	61	60	26	25	29	33	32	31	35	37
Publishing / education company	41	90	102	104	118	126	146	148	154	150	144	135	130	127
School of medicine	115	117	118	116	117	118	122	124	122	123	125	124	123	124
Total	632	655	680	674	686	697	716	716	729	736	728	707	694	687

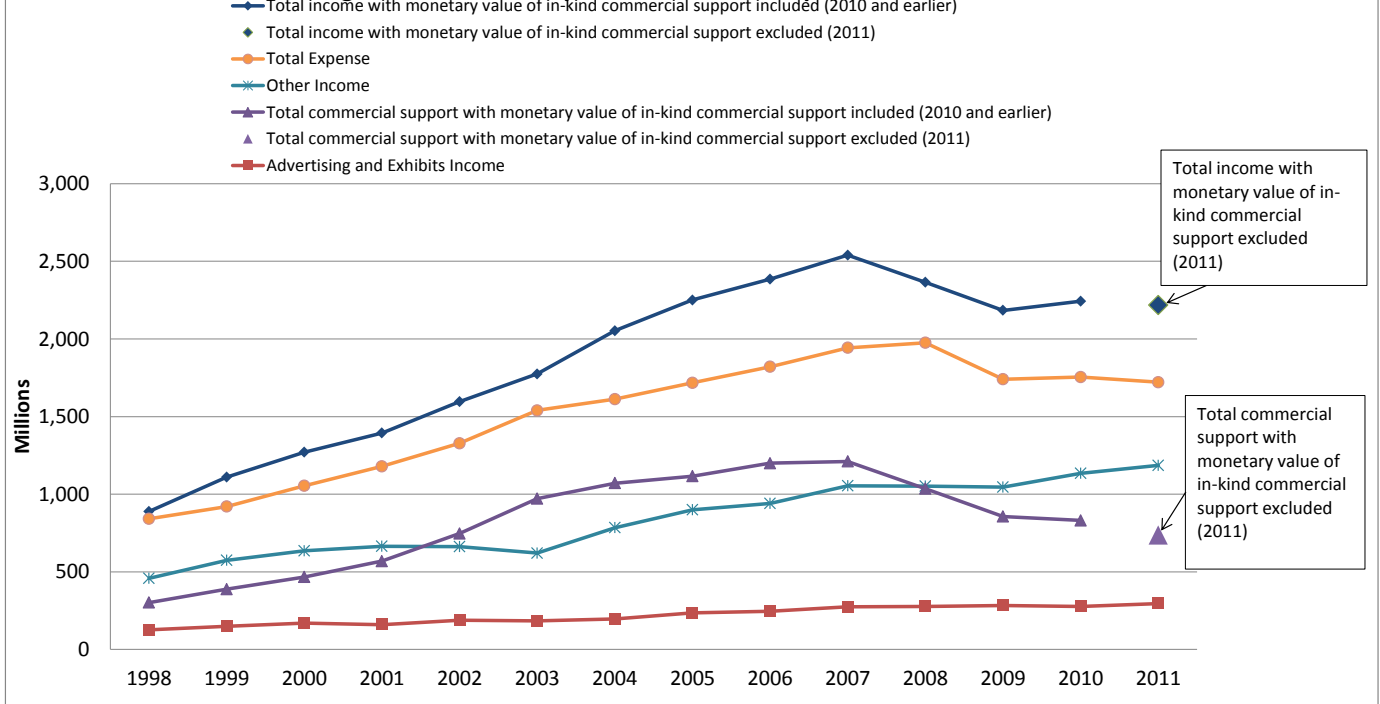
The number of ACCME-accredited providers grew steadily until 2007. The ACCME lost 49 providers (7%) since 2007, including 7 providers (1%) between 2010 and 2011. Most of the loss in numbers has been from the following provider types: nonprofit physician membership organizations, publishing/education companies, and hospital/health care delivery systems. The numbers of schools of medicine, government or military providers, and insurance/managed-care companies has remained fairly steady. There has been a small decrease in nonprofit other providers and a slight increase in the number of not classified organizations.

When providers voluntarily withdraw their ACCME accreditation, the ACCME ascertains the reason whenever possible. The most common reason providers give is corporate changes, such as mergers and acquisitions. In addition, smaller providers sometimes withdraw because they have decided to offer CME through partnerships (joint sponsorships) with larger accredited providers. For that reason, the decline does not necessarily represent a reduction in physicians' and other health care professionals' access to CME. As illustrated in table 3.1, the number of physician and nonphysician participants in CME activities has increased steadily over the years, although participant numbers remained virtually flat between 2010 and 2011. The numbers of activities and hours of instruction increased between 2010 and 2011.



CME Presented by ACCME-Accredited Providers Only

Figure 3.1. CME Enterprise Revenue and Expense, 1998-2011

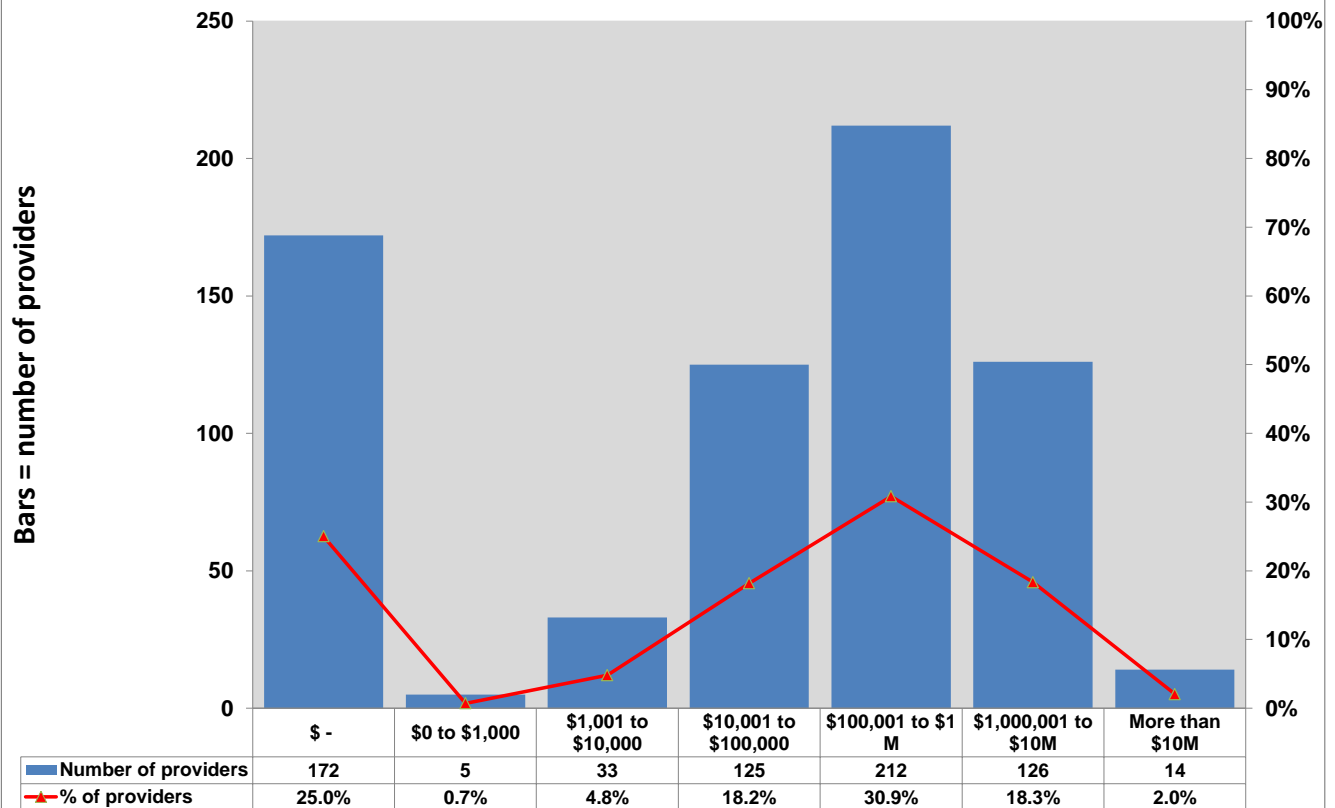


In 2011, other income made up 53% of total income, commercial support 33%, and advertising and exhibits 13%. Other income has increased steadily over the years with an increase of 4 percent in 2011 from 2010.

It is important to note that through 2010, ACCME-accredited and state-accredited providers reported the monetary value of in-kind commercial support they received, and included that amount in their total commercial support numbers. Beginning in 2011, due to a modification in ACCME commercial support reporting requirements, accredited providers no longer included the monetary value of in-kind support and reported only the dollar values for funds actually received. The nature (required) and source (optional) of in-kind commercial support is now reported qualitatively. Examples of in-kind commercial support include equipment, supplies, facilities, and other nonmonetary resources provided by a commercial interest in support of the CME activity. Therefore, comparisons between 2011 commercial support numbers and previous years will not be valid. Total income decreased 1% in 2011 from 2010; this total may have been affected by the modification in commercial report reporting. The modification in commercial support reporting is indicated in the figure through the breaks in the lines for total income and total commercial support.



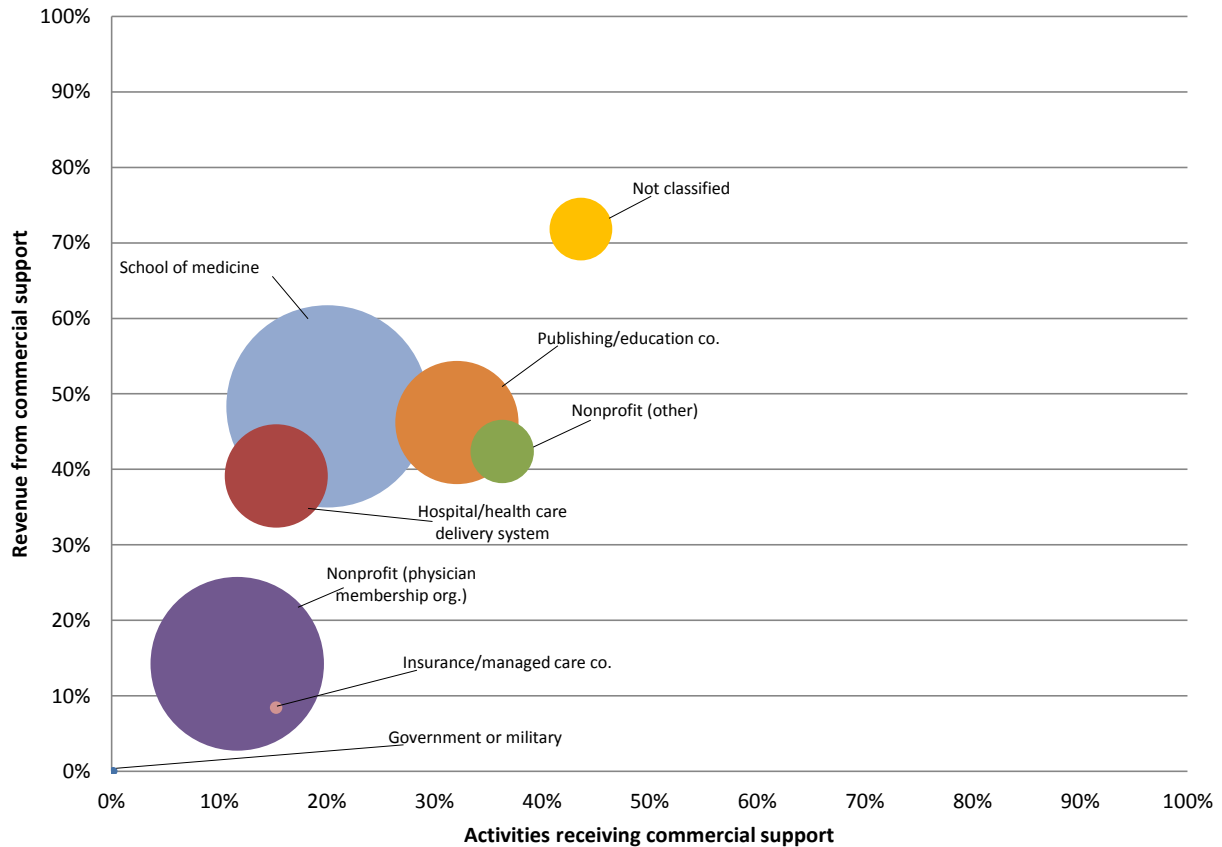
CME Presented by ACCME-Accredited Providers Only
Figure 3.2. Distribution of Commercial Support Among ACCME-Accredited Providers - 2011



The majority of providers (80%) bring in \$1 million or less each year in commercial support, with almost half of providers (48%) bringing in \$100,000 or less. One-fifth of providers (20 %) bring in more than \$1 million per year in commercial support, with the smallest percentage of those (2%) bringing in \$10 million or more.



CME Presented by ACCME-Accredited Providers Only
Figure 3.3. Commercial Support by Provider Type, 2011
 Circle Size Proportional to Hours of Instruction¹



This figure illustrates the distribution of commercial support by provider type. It shows the percentage of revenue that each provider type receives from commercial support, the percentage of activities receiving commercial support by provider type, and the total hours of instruction (with commercial support) offered by provider type, represented by the circle size. The figure shows that nonprofit physician membership organizations receive the smallest percentage of their revenue from commercial support and produce the smallest percentage of commercially supported activities (excluding government or military providers—see note), while not classified providers receive the largest percentage of their revenue from commercial support and produce the largest percentage of commercially supported activities, although they offer fewer overall hours of instruction. Medical schools receive about half of their income from commercial support, about 20% of their activities are commercially supported, and they produce the most overall hours of instruction.

¹Commercial support accounted for fewer than 1% of activities and less than 1% of total revenue for government or military providers.



CME Presented by ACCME-Accredited Providers Only

Table 3.9. CME Activities and Participants with/without Commercial Support - 2011

	Activities		Physician participants		Nonphysician participants	
	Count	%	Count	%	Count	%
No commercial support	70,073	79%	9,036,226	80%	5,929,357	75%
Commercial support	18,105	21%	2,314,899	20%	2,009,140	25%
Total	88,178	100%	11,351,125	100%	7,938,497	100%

In 2011, the majority of CME activities (79%) did not receive commercial support, accounting for approximately 80% of physician participants, and 75% of nonphysician participants. Twenty-one percent of CME activities did receive commercial support, bringing in approximately 20% of physician participants, and 25% of nonphysician participants.



CME Presented by ACCME-Accredited Providers Only

Table 3.10. Total Numbers of Activities, Hours, and Participants—2011

	Activities	Hours of instruction	Physician participants	Nonphysician participants
Courses	40,230	290,487	1,509,561	1,151,863
Regularly scheduled series	10,135	274,698	3,039,311	1,302,295
Internet (live)	1,768	5,211	42,746	111,852
Test-item writing	102	967	1,374	153
Committee learning	225	932	3,113	490
Performance improvement	252	4,770	41,259	6,261
Internet searching and learning	141	3,350	91,014	4,544
Internet (enduring materials)	25,089	41,408	4,291,484	4,574,275
Enduring materials (other)	6,331	38,012	1,184,709	448,817
Learning from teaching	103	957	2,030	1,125
Journal CME	3,736	6,061	1,108,145	335,473
Manuscript review	66	230	36,379	1,349
Total	88,178	667,081	11,351,125	7,938,497

CME Presented by ACCME-Accredited Providers Only

Table 3.11. Numbers of Activities, Hours, and Participants with Commercial Support—2011

	Activities	Hours of instruction	Physician participants	Nonphysician participants
Courses	10,394	71,090	790,218	486,561
Regularly scheduled series	341	9,445	150,377	72,813
Internet (live)	608	760	16,926	48,253
Test-item writing	0	0	0	0
Committee learning	0	0	0	0
Performance improvement	86	1,545	18,707	4,557
Internet searching and learning	11	8	1,395	333
Internet (enduring materials)	5,685	6,891	1,206,782	1,321,481
Enduring materials (other)	785	2,920	89,918	52,217
Learning from teaching	3	57	287	1,021
Journal CME	191	390	40,289	21,904
Manuscript review	1	2	0	0
Total	18,105	93,108	2,314,899	2,009,140

CME Presented by ACCME-Accredited Providers Only

Table 3.12. Numbers of Activities, Hours, and Participants without Commercial Support—2011

	Activities	Hours of instruction	Physician participants	Nonphysician participants
Courses	29,836	219,397	719,343	665,302
Regularly scheduled series	9,794	265,253	2,888,934	1,229,482
Internet (live)	1,160	4,451	25,820	63,599
Test-item writing	102	967	1,374	153
Committee learning	225	932	3,113	490
Performance improvement	166	3,225	22,552	1,704
Internet searching and learning	130	3,342	89,619	4,211
Internet (enduring materials)	19,404	34,517	3,084,702	3,252,794
Enduring materials (other)	5,546	35,092	1,094,791	396,600
Learning from teaching	100	899	1,743	104
Journal CME	3,545	5,671	1,067,856	313,569
Manuscript review	65	228	36,379	1,349
Total	70,073	573,973	9,036,226	5,929,357

ACCME® 2011 Annual Report Data Glossary (in alphabetical order)

The terms and definitions below only refer to organizations, programs, and activities within the ACCME accreditation system. For more information, visit www.accme.org.

ACCME-accredited provider	An organization accredited by the ACCME as a provider of continuing medical education. ACCME-accredited providers represent a range of organizational types and offer CME primarily to national or international audiences of physicians and other health care professionals. See also <i>state-accredited providers</i> .
Advertising and exhibits income	Advertising and exhibits are promotional activities and not continuing medical education. Therefore, monies paid by commercial interests to providers for these promotional activities are not considered to be commercial support .
CME activity	A CME activity is an educational offering that is planned, implemented, and evaluated in accordance with the ACCME Accreditation Criteria, Standards for Commercial Support, and policies.
Commercial interest	A commercial interest , as defined by the ACCME, is any entity producing, marketing, re-selling, or distributing health care goods or services consumed by, or used on, patients. The ACCME does not consider providers of clinical service directly to patients to be commercial interests. A commercial interest is not eligible for ACCME accreditation.
Commercial support	Commercial support for a CME activity is monetary or in-kind contributions given by a commercial interest that is used to pay all or part of the costs of a CME activity. The requirements for receiving and managing commercial support are explained in the ACCME Standards for Commercial Support SM . Advertising and exhibit income is not considered commercial support.
Committee learning	Committee learning is a CME activity that involves a learner's participation in a committee process addressing a subject that would meet the ACCME definition of CME if it were taught or learned in another format.
Course	A course is a live CME activity where the learner participates in person. A course is planned as an individual event. Examples: annual meeting, conference, seminar. For events with multiple sessions, such as annual meetings, accredited providers report one activity and calculate the hours of instruction by totaling the hours of all educational sessions offered for CME credit. To calculate the numbers of learners, accredited providers report the number of learners registered for the overall event. Accredited providers are not required to calculate participant totals from the individual sessions. If a course is held multiple times, then each instance is reported as a separate activity.
Directly sponsored	A directly sponsored activity is one that is planned, implemented, and evaluated by the accredited provider. This definition includes co-sponsored activities (offered by two accredited providers) reported by the accredited provider that awards the credit.
Enduring material (other)	An enduring material is an activity that is printed or recorded and does not have a specific time or location designated for participation. Rather, the participant determines where and when to complete the activity. Enduring materials can be available for less than a year, a year, or multiple years. Each enduring material is counted as 1 activity for each year it is available, whether it is active for the entire year or part of the year. The accredited provider reports the number of learners who participated during the year, as well as the income and expense related to the activity for that year. Accredited providers do not report cumulative data for an enduring material activity spanning multiple years.

Expenses	Expenses are the total cost of goods, services, and facilities allocated to support the accredited provider's CME program. Examples: amounts spent for CME staff salaries, faculty honoraria, and meeting space.
Hours of instruction	<p>Hours of instruction represents the total hours of educational instruction provided. For example, if a 1-day course lasts 8 hours (not including breaks or meals), then the total hours of instruction reported for that course is 8.</p> <p>Hours of instruction may or may not correspond to the number of credits designated for the American Medical Association Physician's Recognition Award. Accredited providers have the option to report the number of <i>AMA PRA Category 1 Credits™</i> designated for activities but they are not required to do so.</p>
In-kind commercial support	In-kind contributions are nonmonetary resources provided by a commercial interest in support of a CME activity. Examples of in-kind support include equipment, supplies, and facilities.
Internet (enduring materials)	<p>An Internet enduring material activity is an "on demand activity," meaning that there is no specific time designated for participation. Rather, the participant determines when to complete the activity. Examples: online interactive educational module, recorded presentation, podcast.</p> <p>Internet enduring materials can be available for less than a year, a year, or multiple years. Each Internet enduring material is counted as one activity for each year it is available, whether it is active for the entire year or part of the year. The accredited provider reports the number of learners who participated during the year, as well as the income and expense related to the activity for that year. Accredited providers do not report cumulative data for an Internet enduring material activity spanning multiple years.</p>
Internet (live)	An Internet live activity is an online course available via the Internet at a certain time on a certain date and is only available in real-time, just as if it were a course held in an auditorium. Once the event has taken place, learners may no longer participate in that activity unless it is again presented on a specific date and time and is only available in real-time. If an Internet live activity is presented on multiple occasions, each event is counted as one activity. Example: webcast.
Internet searching and learning	<p>Internet searching and learning CME is based on a learner identifying a problem in practice and then researching the answer online using sources that are facilitated by an accredited provider. For the purpose of ACCME data collection, the ACCME includes Internet point-of-care learning, as defined by the American Medical Association, in the category Internet searching and learning.</p> <p>Providers that offer Internet searching and learning CME aggregate their data from all learners and report it as a single activity. For hours of instruction, accredited providers specify the amount of time they believe a learner would take to complete the Internet searching and learning CME activity. The number of participants equals the total number of persons who participated in Internet searching and learning as a CME activity. Each participant is counted once, regardless of how many times they participated or how many pages they viewed.</p> <p>For example, a provider offers Internet searching and learning CME and 50 physicians participate. Each physician spent 30 minutes participating in this activity. The accredited provider reports this as 1 Internet searching and learning CME activity with 50 physician participants and .5 hours of instruction.</p>
Jointly sponsored	A jointly sponsored activity is planned, implemented, and evaluated by the accredited provider and a nonaccredited entity.

Journal-based CME	<p>A journal-based CME activity includes three phases: the participant reads an article in print or in a format adapted for special needs, engages in a self-directed phase stipulated by the accredited provider that may include reflection, discussion, or debate about the article, and completes a pre-determined set of questions or tasks related to the article content.</p> <p>Each article is counted as 1 activity. To calculate hours of instruction, the accredited provider specifies the amount of time required to complete the activity. The number of participants reported by the accredited provider equals the total number of individuals who completed the activity. Each participant is counted once, regardless of how many times they worked on the activity.</p> <p>For example, an accredited provider produces a journal that contains an article that is designated as a journal-based CME activity. Twenty physicians read the article, reflect on the content, and complete questions related to the content of the article. The physicians spend 1 hour on this activity. The provider would report this as 1 journal-based CME activity with 20 physician participants and 1 hour of instruction.</p>
Learning from teaching	<p>Learning from teaching activities are personal learning projects designed and implemented by the learner with facilitation from the accredited provider. The ACCME does not have special requirements for this activity type. The ACCME developed the learning from teaching label as a corollary to the <i>AMA PRA Category 1 Credits™</i> awarded directly to physicians for "Teaching at a live activity."</p> <p>To report learning from teaching CME, accredited providers aggregate the data from all learners and count it as a single activity. For hours of instruction, accredited providers specify the amount of time they believe a learner would take to complete the learning from teaching CME activity. The number of participants equals the number of individuals who participated in this CME activity. Each participant is counted once, regardless of how many times they worked on the activity.</p> <p>For example, an accredited provider created a learning from teaching activity for 10 physicians. Each physician completed the CME activity in 2 hours. The accredited provider reports this as 1 learning from teaching CME activity with 10 physician participants and 2 hours of instruction.</p>
Manuscript review	<p>Manuscript review CME is based on a learner's participation in a manuscript's pre-publication review process.</p> <p>When calculating the number of manuscript review CME activities, accredited providers report each journal for which the manuscript(s) is being reviewed as 1 activity regardless of the number of manuscripts or reviewers. For hours of instruction, accredited providers specify the amount of time they believe a learner would take to complete the manuscript review CME activity. The number of participants equals the total number of learners engaged in reviewing manuscripts as CME. Each participant is counted once regardless of how many manuscripts they reviewed.</p> <p>For example, an accredited provider publishes 1 journal. During the course of the year, 25 physicians reviewed manuscripts for this journal. Each physician spent 2 hours on the review. The accredited provider reports this as 1 manuscript review CME activity with 25 physician participants and 2 hours of instruction.</p>
Nonphysician participants	<p>Nonphysician participants are activity attendees other than MDs and DOs, such as nurses, physician assistants, and other health professionals. Residents are also included in this category.</p>
Other income	<p>Other income includes all income the accredited provider received for its CME activities and CME program that does not fall under commercial support or advertising and exhibit income. The most common examples of other income include activity registration fees, grants from government agencies or independent nonprofit foundations, and allocations from the accredited provider's parent organization or other internal departments to pay for the CME unit's expenses.</p>

Performance improvement	<p>Performance improvement CME is based on a learner's participation in a project established and/or guided by a CME provider. A physician identifies an educational need through a measure of his/her performance in practice, engages in educational experiences to meet the need, integrates the education into patient care, and then re-evaluates his/her performance.</p> <p>To report performance improvement CME, accredited providers count each learning project as 1 performance improvement CME activity, regardless of whether it is created for an individual physician or a group of physicians. For hours of instruction, accredited providers specify the amount of time they believe a learner would take to complete the performance improvement CME activity. The number of participants equals the total number of learners who participated in the learning project. Each participant is counted once, regardless of how many times they worked on the activity.</p> <p>For example, an accredited provider established a performance improvement learning project. Three physicians participated; each completed the learning project in 20 hours. The accredited provider reports this as 1 performance improvement CME activity with 3 physician participants and 20 hours of instruction.</p>
Physician participants	<p>Physician participants are activity attendees who are MDs or DOs. Residents are <i>not</i> included in this category, but are included under nonphysician participants.</p>
Regularly scheduled series	<p>A regularly scheduled series (RSS) is a CME activity that is planned as a series with multiple, ongoing sessions, offered weekly, monthly, or quarterly; and is primarily planned by and presented to the accredited organization's professional staff. Examples of regularly scheduled series are grand rounds, tumor boards, and morbidity and mortality conferences.</p> <p>Accredited providers report each RSS as 1 activity. In addition, accredited providers follow the following guidelines:</p> <ol style="list-style-type: none"> 1. The cumulative number of hours for all sessions within a series equals the number of hours for that activity and 2. Each physician is counted as a learner for each session he/she attends in the series. <p>For example: Internal Medicine Grand Rounds is planned for the entire year as 1 series. Participants meet weekly during the year for 1 hour each week. The accredited provider reports the series as 1 activity with 52 hours of instruction. If 20 physicians participated in each session, total physician participants would be 1,040 (20 physicians per session multiplied by 52 sessions) for that single activity.</p>
State-accredited provider	<p>State-accredited providers are accredited by a state/territory medical society that is recognized by the ACCME as an accreditor. State-accredited providers offer CME primarily to learners from their state or contiguous states as opposed to ACCME-accredited providers, which offer CME primarily to national or international audiences.</p>

Test-item writing	<p>Test-item writing is a CME activity based on a learner's participation in the pre-publication development and review of any type of test item. Examples: multiple choice questions, standardized patient cases.</p> <p>Test-item writing CME activities may consist of either of the following processes:</p> <ol style="list-style-type: none"> 1. When questions are written for an item pool and are later used to build a variety of tests, then building the questions for a single pool is counted as 1 activity. Examples: the Pediatric Item Writing Committee of the National Board of Medical Examiners or the second year clerkship exams at a medical school. 2. When questions, items, or cases are created for 1 specific test, then each test is counted as a separate CME activity. Example: multiple choice questions for the 2012 clerkship exam in pediatrics. <p>For hours of instruction, accredited providers specify the amount of time they believe a learner would take to complete the test-item writing CME activity. The number of participants should equal the total number of persons who engaged in the test-item writing CME activity. Each participant is counted once regardless of how many test items they write.</p> <p>For example, an accredited provider planned a CME activity where 5 physicians wrote test items for an American Board of Medical Specialties (ABMS) member board certification examination question pool. Each physician completed the test-item writing CME activity in 10 hours. The accredited provider reports this as a test-item writing CME activity with 5 physician participants and 10 hours of instruction.</p>
-----------------------------------	--